

## Product datasheet for **TP321563M**

### **LRR55 (NM\_001005210) Human Recombinant Protein**

#### **Product data:**

**Product Type:** Recombinant Proteins  
**Description:** Recombinant protein of human leucine rich repeat containing 55 (LRR55), 100 µg  
**Species:** Human  
**Expression Host:** HEK293T  
**Expression cDNA** >RC221563 representing NM\_001005210  
**Clone or AA Sequence:** **Red**=Cloning site **Green**=Tags(s)

MLRSPTFTDAGPRCSCLPVSQTLDSMDTVLMGSLQHCCCLLPKMGDTWAQLPWP GPPHPAMLLISLLLAA  
GLMHSDAGTSCPVLCTCRNQWDCSSQRLFSVPPDLPMDTRNLSLAHN RITAVPPGYLTCY MELQVLDLH  
NNSLMELPRGLFLHAKRLAHL DLSYNNFSHV PADMFQEAHGLVHIDL SHNPWLR RVHPQAFQGLMQLRDL  
DLSYGGLAFLSLEALEGLPGLVTLQIGGNPWVCGCTMEPLLKWL RNRIQRCTADSQ LAEACRGPPEVEGAP  
LFSLTEESFKACHLT LTLDDYLFI AFGVFSIASVATNFLLGITANCCHR WSKASEEEEEI

**TRTRPLEQKLISEEDLAANDILDYKDDDDKV**

**Tag:** C-Myc/DDK  
**Predicted MW:** 37.5 kDa  
**Concentration:** >0.05 µg/µL as determined by microplate BCA method  
**Purity:** > 80% as determined by SDS-PAGE and Coomassie blue staining  
**Buffer:** 25 mM Tris-HCl, 100 mM glycine, pH 7.3, 10% glycerol  
**Preparation:** Recombinant protein was captured through anti-DDK affinity column followed by conventional chromatography steps.  
**Note:** For testing in cell culture applications, please filter before use. Note that you may experience some loss of protein during the filtration process.  
**Storage:** Store at -80°C.  
**Stability:** Stable for 12 months from the date of receipt of the product under proper storage and handling conditions. Avoid repeated freeze-thaw cycles.  
**RefSeq:** [NP\\_001005210](#)  
**Locus ID:** 219527



[View online »](#)

UniProt ID: [Q6ZSA7](#), [A0A494COH1](#)

RefSeq Size: 3797

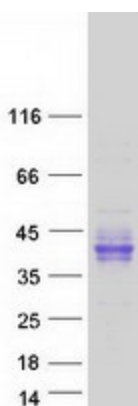
Cytogenetics: 11q12.1

RefSeq ORF: 1023

**Summary:** Auxiliary protein of the large-conductance, voltage and calcium-activated potassium channel (BK alpha). Modulates gating properties by producing a marked shift in the BK channel's voltage dependence of activation in the hyperpolarizing direction, and in the absence of calcium. [UniProtKB/Swiss-Prot Function]

**Protein Families:** Transmembrane

### Product images:



Coomassie blue staining of purified LRRC55 protein (Cat# [TP321563]). The protein was produced from HEK293T cells transfected with LRRC55 cDNA clone (Cat# [RC221563]) using MegaTran 2.0 (Cat# [TT210002]).