

Product datasheet for **TP321563**

LRR55 (NM_001005210) Human Recombinant Protein

Product data:

Product Type:	Recombinant Proteins
Description:	Recombinant protein of human leucine rich repeat containing 55 (LRR55), 20 µg
Species:	Human
Expression Host:	HEK293T
Expression cDNA	>RC221563 representing NM_001005210
Clone or AA Sequence:	Red=Cloning site Green=Tags(s)

MLRSPTFTDAGPRCSCLPVSQTLDSMDTVLMGSLQHCCCLLPKMGDTWAQLPWP GPPHPAMLLISLLAA
GLMHSDAGTSCPVLCTCRNQWDCSSQRLFSVPPDLPMDTRNLSLAHN RITAVPPGYLTCY MELQVLDLH
NNSLMELPRGLFLHAKRLAHL DLSYNNFSHV PADMFQEAHGLVHIDL SHNPWLR RVHPQAFQGLMQLRDL
DLSYGGLAFLSLEALEGLPGLVTLQIGGNPWVCGCTMEPLLKWL RNRIQRCTADSQ LAECRGPPEVEGAP
LFSLTEESFKACHLT LTLDDYLFI AFGVFSIASVATNFLLGITANCCHR WSKASEEEEEI

TRTRPLEQKLISEEDLAANDILDYKDDDDKV

Tag:	C-Myc/DDK
Predicted MW:	37.5 kDa
Concentration:	>0.05 µg/µL as determined by microplate BCA method
Purity:	> 80% as determined by SDS-PAGE and Coomassie blue staining
Buffer:	25 mM Tris-HCl, 100 mM glycine, pH 7.3, 10% glycerol
Preparation:	Recombinant protein was captured through anti-DDK affinity column followed by conventional chromatography steps.
Note:	For testing in cell culture applications, please filter before use. Note that you may experience some loss of protein during the filtration process.
Storage:	Store at -80°C.
Stability:	Stable for 12 months from the date of receipt of the product under proper storage and handling conditions. Avoid repeated freeze-thaw cycles.
RefSeq:	NP_001005210
Locus ID:	219527



[View online »](#)

UniProt ID: [Q6ZSA7](#), [A0A494COH1](#)

RefSeq Size: 3797

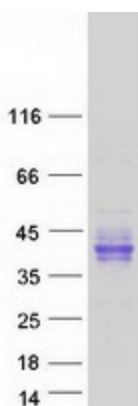
Cytogenetics: 11q12.1

RefSeq ORF: 1023

Summary: Auxiliary protein of the large-conductance, voltage and calcium-activated potassium channel (BK alpha). Modulates gating properties by producing a marked shift in the BK channel's voltage dependence of activation in the hyperpolarizing direction, and in the absence of calcium. [UniProtKB/Swiss-Prot Function]

Protein Families: Transmembrane

Product images:



Coomassie blue staining of purified LRRC55 protein (Cat# TP321563). The protein was produced from HEK293T cells transfected with LRRC55 cDNA clone (Cat# [RC221563]) using MegaTran 2.0 (Cat# [TT210002]).