

Product datasheet for TP321529L

LUC7L (NM_201412) Human Recombinant Protein

Product data:

Product Type:	Recombinant Proteins
Description:	Recombinant protein of human LUC7-like (<i>S. cerevisiae</i>) (LUC7L), transcript variant 2, 1 mg
Species:	Human
Expression Host:	HEK293T
Expression cDNA Clone or AA Sequence:	>RC221529 representing NM_201412 Red =Cloning site Green =Tags(s)

MSAQAQMRALLDQLMGTDGDETRQVRKFTDDRVCKSHLLDCCPHDILAGTRMDLGECTKIHDALRAD
YEIASKERDLFFELDAMDHLESFIAECDRRETELAKKRLAETQEEISAEVSAKAKEVHELNEEIGKLLAKA
EQLGAEGNVDESQKILMEVEKVRAKKKEAEEYRNSMPASSFQQQKLRVCEVCSAYLGLHDNDRRLADHF
GGKLHLGFIQIREKLDQLRKTVAEKQEKRNQDRLRRREEREREERLSRRSGSRTRDRRRSRDRRRRRS
RSTSRERRKLSRSRDRHRRHRSRSHSRGHRRASDRSAKYKFSRERASREESWESGRSERGPPDWR
LESSNGKMASRRSEEKEAGEI

TRTRPLEQKLISEEDLAANDILDYKDDDDKV

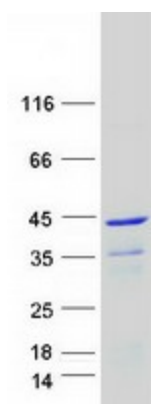
Tag:	C-Myc/DDK
Predicted MW:	43.5 kDa
Concentration:	>0.05 µg/µL as determined by microplate BCA method
Purity:	> 80% as determined by SDS-PAGE and Coomassie blue staining
Buffer:	25 mM Tris-HCl, 100 mM glycine, pH 7.3, 10% glycerol
Preparation:	Recombinant protein was captured through anti-DDK affinity column followed by conventional chromatography steps.
Note:	For testing in cell culture applications, please filter before use. Note that you may experience some loss of protein during the filtration process.
Storage:	Store at -80°C.
Stability:	Stable for 12 months from the date of receipt of the product under proper storage and handling conditions. Avoid repeated freeze-thaw cycles.
RefSeq:	NP_958815
Locus ID:	55692



[View online »](#)

UniProt ID:	Q9NQ29
RefSeq Size:	1452
Cytogenetics:	16p13.3
RefSeq ORF:	1113
Synonyms:	hLuc7B1; Luc7; LUC7B1; SR+89
Summary:	The LUC7L gene may represent a mammalian heterochromatic gene, encoding a putative RNA-binding protein similar to the yeast Luc7p subunit of the U1 snRNP splicing complex that is normally required for 5-prime splice site selection (Tufarelli et al., 2001 [PubMed 11170747]). [supplied by OMIM, Mar 2008]

Product images:



Coomassie blue staining of purified LUC7L protein (Cat# [TP321529]). The protein was produced from HEK293T cells transfected with LUC7L cDNA clone (Cat# [RC221529]) using MegaTran 2.0 (Cat# [TT210002]).