

Product datasheet for **TP321508**

RAB23 (NM_183227) Human Recombinant Protein

Product data:

Product Type:	Recombinant Proteins
Description:	Recombinant protein of human RAB23, member RAS oncogene family (RAB23), transcript variant 2, 20 µg
Species:	Human
Expression Host:	HEK293T
Expression cDNA Clone or AA Sequence:	>RC221508 protein sequence Red =Cloning site Green =Tags(s)

MLEEDMEVAIKMWWVNGAVGKSSMIQRYCKGIFTKDYKKTIGVDFLERQIQVNDEDVRLMLWDTAGQEE
FDAITKAYYRGAQACVLVSTTDRESFEAVSSWREKVVAEVGDIPTLVQNKIDLLDDSCIKNEEAEALA
KRLKLRFYRTSVKEDLNVNEVFKYLAEKYLQKLKQQAEDPELTHSSSNKIGVFNTSGGSHSGQNSGTLN
GGDVINLRPNKQRTKKNRNPFSKCSIP

TRTRPLEQKLISEEDLAANDILDYKDDDDKV

Tag:	C-Myc/DDK
Predicted MW:	26.5 kDa
Concentration:	>0.05 µg/µL as determined by microplate BCA method
Purity:	> 80% as determined by SDS-PAGE and Coomassie blue staining
Buffer:	25 mM Tris-HCl, 100 mM glycine, pH 7.3, 10% glycerol
Preparation:	Recombinant protein was captured through anti-DDK affinity column followed by conventional chromatography steps.
Note:	For testing in cell culture applications, please filter before use. Note that you may experience some loss of protein during the filtration process.
Storage:	Store at -80°C.
Stability:	Stable for 12 months from the date of receipt of the product under proper storage and handling conditions. Avoid repeated freeze-thaw cycles.
RefSeq:	<u>NP_899050</u>
Locus ID:	51715



[View online »](#)

UniProt ID: [Q9ULC3](#), [A0A024RD41](#)

RefSeq Size: 4391

Cytogenetics: 6p12.1-p11.2

RefSeq ORF: 711

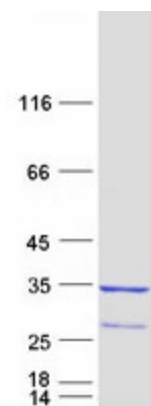
Synonyms: HSPC137

Summary: This gene encodes a small GTPase of the Ras superfamily. Rab proteins are involved in the regulation of diverse cellular functions associated with intracellular membrane trafficking, including autophagy and immune response to bacterial infection. The encoded protein may play a role in central nervous system development by antagonizing sonic hedgehog signaling. Disruption of this gene has been implicated in Carpenter syndrome as well as cancer. Alternative splicing results in multiple transcript variants. [provided by RefSeq, Jul 2013]

Protein Families: Druggable Genome

Protein Pathways: Hedgehog signaling pathway

Product images:



Coomassie blue staining of purified RAB23 protein (Cat# TP321508). The protein was produced from HEK293T cells transfected with RAB23 cDNA clone (Cat# [RC221508]) using MegaTran 2.0 (Cat# [TT210002]).