

## Product datasheet for **TP321478M**

### Junctional Adhesion Molecule 1 (F11R) (NM\_016946) Human Recombinant Protein

#### Product data:

Product Type:	Recombinant Proteins
Description:	Recombinant protein of human F11 receptor (F11R), 100 µg
Species:	Human
Expression Host:	HEK293T
Expression cDNA Clone or AA Sequence:	>RC221478 representing NM_016946 <b>Red</b> =Cloning site <b>Green</b> =Tags(s)
	 MGTKAQVERKLLCLFILAILLCSLALGSVTVHSSEPEVRIPENNPVKLSCAYSGFSSPRVEWKFDQGD TLVLCYNNKITASYEDRVTFLLPTGITFKSVTREDTGTTCMVSEEGGNSYGEVKVVLVPPSKPTVNIP SSATIGNRAVLTCSEQDGSPPSEYTWFKDGIVMPTNPKSTRAFSNSSYVLNPTTGELVFDPLSASDTGEY SCEARNGYGTPMTSNAVRMEAVERNVGVIVAAVLVTLILLGILVFGIWFAYSRRGHFDRTKKGTSKVKVIY SQPSARSEGEFKQTSSFLV  <b>TRTRPLEQKLISEEDLAANDILDYKDDDDKV</b>
Tag:	C-Myc/DDK
Predicted MW:	29.8 kDa
Concentration:	>0.05 µg/µL as determined by microplate BCA method
Purity:	> 80% as determined by SDS-PAGE and Coomassie blue staining
Buffer:	25 mM Tris-HCl, 100 mM glycine, pH 7.3, 10% glycerol
Preparation:	Recombinant protein was captured through anti-DDK affinity column followed by conventional chromatography steps.
Note:	For testing in cell culture applications, please filter before use. Note that you may experience some loss of protein during the filtration process.
Storage:	Store at -80°C.
Stability:	Stable for 12 months from the date of receipt of the product under proper storage and handling conditions. Avoid repeated freeze-thaw cycles.
RefSeq:	<u><a href="#">NP_058642</a></u>
Locus ID:	50848



[View online »](#)

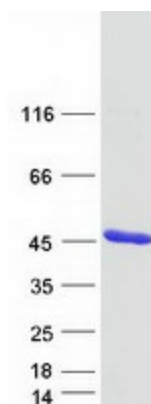
UniProt ID: [Q9Y624](#), [Q6FIB4](#)  
RefSeq Size: 3660  
Cytogenetics: 1q23.3  
RefSeq ORF: 897  
Synonyms: CD321; JAM; JAM1; JAMA; JCAM; KAT; PAM-1

**Summary:** Tight junctions represent one mode of cell-to-cell adhesion in epithelial or endothelial cell sheets, forming continuous seals around cells and serving as a physical barrier to prevent solutes and water from passing freely through the paracellular space. The protein encoded by this immunoglobulin superfamily gene member is an important regulator of tight junction assembly in epithelia. In addition, the encoded protein can act as (1) a receptor for reovirus, (2) a ligand for the integrin LFA1, involved in leukocyte transmigration, and (3) a platelet receptor. Multiple 5' alternatively spliced variants, encoding the same protein, have been identified but their biological validity has not been established. [provided by RefSeq, Jul 2008]

**Protein Families:** Druggable Genome, Transmembrane

**Protein Pathways:** Cell adhesion molecules (CAMs), Epithelial cell signaling in Helicobacter pylori infection, Leukocyte transendothelial migration, Tight junction

### Product images:



Coomassie blue staining of purified F11R protein (Cat# [TP321478]). The protein was produced from HEK293T cells transfected with F11R cDNA clone (Cat# [RC221478]) using MegaTran 2.0 (Cat# [TT210002]).