

## Product datasheet for TP321462

### SAMD3 (NM\_001017373) Human Recombinant Protein

#### Product data:

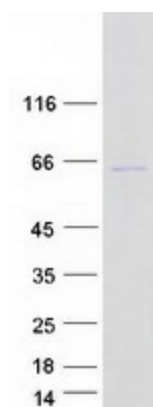
Product Type:	Recombinant Proteins
Description:	Recombinant protein of human sterile alpha motif domain containing 3 (SAMD3), transcript variant 1, 20 µg
Species:	Human
Expression Host:	HEK293T
Expression cDNA Clone or AA Sequence:	>RC221462 representing NM_001017373 Red=Cloning site Green=Tags(s)
	<p>METWSVEQVCSWLVEKNLGEVHRFQEEVSGAALLALNDRMVQQLVKKIGHQAVLMDLIKQYKQNTQGL KSPENPKKAALVMQTEAARDYRDEESSPARHGEQMPFYPANLNDGLIDQRLVKQRRNVKQILARSKA LQWTKSYVLPEFPYDVKCMLEQKCPDHSMRIRIEFLQADMTKYLEGSLYPSTQQYNDVVNALLQAHPF LDEDGCGFFLWKRALKDRFKYVRRPIEDDEQVIRNKCKFGHRRGQTRKSLADIRFDEIKLVQIKEEAVCF DSELDEHIKWFQQEYVKTEKDWREIDKRMSQTLEIRRMIGSRTPDKDILKLPFLKCPYQMFREFQLLT RTDIYKKTRHILESYSNLTFSFVVDNPNIVLQEKMKHYTDEDMLKYMKMTATCLLLPDVFGDDPSLF VIMNEQVQVSTPVLVKNPFNMEVCEFSLYLERERLTKVDDCVTALAALVAAFHVFRICPRRLSQTFNF LETLIFDMHSPYFPSLKEKENEVGFQHPLT</p> <p>TRTRPLEQKLISEEDLAANDILDYKDDDDKV</p>
Tag:	C-Myc/DDK
Predicted MW:	61.1 kDa
Concentration:	>0.05 µg/µL as determined by microplate BCA method
Purity:	> 80% as determined by SDS-PAGE and Coomassie blue staining
Buffer:	25 mM Tris-HCl, 100 mM glycine, pH 7.3, 10% glycerol
Preparation:	Recombinant protein was captured through anti-DDK affinity column followed by conventional chromatography steps.
Note:	For testing in cell culture applications, please filter before use. Note that you may experience some loss of protein during the filtration process.
Storage:	Store at -80°C.



[View online »](#)

<b>Stability:</b>	Stable for 12 months from the date of receipt of the product under proper storage and handling conditions. Avoid repeated freeze-thaw cycles.
<b>RefSeq:</b>	<u><a href="#">NP_001017373</a></u>
<b>Locus ID:</b>	154075
<b>UniProt ID:</b>	<u><a href="#">Q8N6K7</a></u>
<b>RefSeq Size:</b>	2093
<b>Cytogenetics:</b>	6q23.1
<b>RefSeq ORF:</b>	1560

### Product images:



Coomassie blue staining of purified SAMD3 protein (Cat# TP321462). The protein was produced from HEK293T cells transfected with SAMD3 cDNA clone (Cat# [RC221462]) using MegaTran 2.0 (Cat# [TT210002]).