

Product datasheet for TP321449

ACCSL (NM_001031854) Human Recombinant Protein

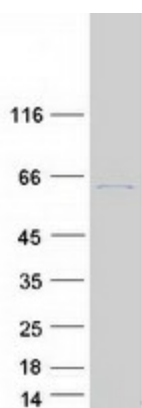
Product data:

Product Type:	Recombinant Proteins
Description:	Recombinant protein of human 1-aminocyclopropane-1-carboxylate synthase homolog (Arabidopsis)(non-functional)-like (ACCSL), 20 µg
Species:	Human
Expression Host:	HEK293T
Expression cDNA Clone or AA Sequence:	>RC221449 representing NM_001031854 Red =Cloning site Green =Tags(s)
	MSHRSDTLPVPSGQRRGRVPRDHSIYTQLEITLHLQQAMTEHFVQLTSRQGLSLEERRHTEAICEHEAL LSRLICRMINLLQSGAASGLELQVPLPSEDSRQDVRVYGRQRAQLSGQPDPVPLSDCEAAFVNRDLSIRGI DISVFYQSSFQDYNAYQKDKYHKDKNTLGFINLGTSENKLCMDLMTERLQESDMNCIEDTLLQYPDWRGQ PFLREEVARFLTYCRAPTRLDPENVVVLNGCCSVFCALAMVLCDPGEAFLVPAPFYGGFAFSSRLYAKV ELIPVHLESEVTNTNHPFQLTVDKLEEALLEARLEGKKVRGLVLINPQNPLGDIYSPDSLMKYLEFAKR YNLHVIIIDEIYMLSVFDESITFFHSILSMKSLPDSNRTHVHWGTSKDFGISGFRFGALYTHNKEVASAVSA FGYLHSISGITQHKLCQLLQNTTEWIDKVYLPNTCYRLREAHKYITAEKALEIPFHNRSGLYVWINLKK YLDPCTFEEERLLYCRFLDNKLLLSRGKTYMCKEPGWFCFLIFADELPRLKLMRRFCVDLQEKEALIVK QLEDAMRE
	TRTRPLEQKLISEEDLAANDILDYKDDDDKV
Tag:	C-Myc/DDK
Predicted MW:	65.1 kDa
Concentration:	>0.05 µg/µL as determined by microplate BCA method
Purity:	> 80% as determined by SDS-PAGE and Coomassie blue staining
Buffer:	25 mM Tris-HCl, 100 mM glycine, pH 7.3, 10% glycerol
Preparation:	Recombinant protein was captured through anti-DDK affinity column followed by conventional chromatography steps.
Note:	For testing in cell culture applications, please filter before use. Note that you may experience some loss of protein during the filtration process.
Storage:	Store at -80°C.



[View online »](#)

Stability:	Stable for 12 months from the date of receipt of the product under proper storage and handling conditions. Avoid repeated freeze-thaw cycles.
RefSeq:	<u>NP_001027025</u>
Locus ID:	390110
UniProt ID:	<u>Q4AC99</u>
RefSeq Size:	1820
Cytogenetics:	11p11.2
RefSeq ORF:	1704

Product images:

Coomassie blue staining of purified ACCSL protein (Cat# TP321449). The protein was produced from HEK293T cells transfected with ACCSL cDNA clone (Cat# [RC221449]) using MegaTran 2.0 (Cat# [TT210002]).