

## Product datasheet for **TP321446**

### alpha Synuclein (SNCA) (NM\_007308) Human Recombinant Protein

#### Product data:

**Product Type:** Recombinant Proteins  
**Description:** Recombinant protein of human synuclein, alpha (non A4 component of amyloid precursor) (SNCA), transcript variant NACP112, 20 µg

**Species:** Human

**Expression Host:** HEK293T

**Expression cDNA Clone or AA Sequence:** >RC221446 representing NM\_007308  
**Red**=Cloning site **Green**=Tags(s)

MDVFMKGLSKAKEGVAAAETKQGVAAEAGKTKEGVLYVGSKTKEGVHGVATVAEKTKEQVTNVGGA  
 V  
 VTGVTAVAQKTVEGAGSIAAATGFVKKDQLGKEGYQDYEPEA

**TR**TRPLEQKLISEEDLAANDILDYKDDDDKV

**Tag:** C-Myc/DDK

**Predicted MW:** 11.2 kDa

**Concentration:** >0.05 µg/µL as determined by microplate BCA method

**Purity:** > 80% as determined by SDS-PAGE and Coomassie blue staining

**Buffer:** 25 mM Tris-HCl, 100 mM glycine, pH 7.3, 10% glycerol

**Preparation:** Recombinant protein was captured through anti-DDK affinity column followed by conventional chromatography steps.

**Note:** For testing in cell culture applications, please filter before use. Note that you may experience some loss of protein during the filtration process.

**Storage:** Store at -80°C.

**Stability:** Stable for 12 months from the date of receipt of the product under proper storage and handling conditions. Avoid repeated freeze-thaw cycles.

**RefSeq:** [NP\\_009292](#)

**Locus ID:** 6622

**UniProt ID:** [P37840](#)



[View online »](#)

RefSeq Size: 1096

Cytogenetics: 4q22.1

RefSeq ORF: 336

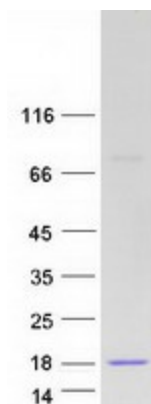
Synonyms: NACP; PARK1; PARK4; PD1

**Summary:** Alpha-synuclein is a member of the synuclein family, which also includes beta- and gamma-synuclein. Synucleins are abundantly expressed in the brain and alpha- and beta-synuclein inhibit phospholipase D2 selectively. SNCA may serve to integrate presynaptic signaling and membrane trafficking. Defects in SNCA have been implicated in the pathogenesis of Parkinson disease. SNCA peptides are a major component of amyloid plaques in the brains of patients with Alzheimer's disease. Alternatively spliced transcripts encoding different isoforms have been identified for this gene. [provided by RefSeq, Feb 2016]

**Protein Families:** Druggable Genome

**Protein Pathways:** Alzheimer's disease, Parkinson's disease

### Product images:



Coomassie blue staining of purified SNCA protein (Cat# TP321446). The protein was produced from HEK293T cells transfected with SNCA cDNA clone (Cat# [RC221446]) using MegaTran 2.0 (Cat# [TT210002]).