

Product datasheet for **TP321431M**

C19orf75 (SIGLECL1) (NM_173635) Human Recombinant Protein

Product data:

Product Type: Recombinant Proteins

Description: Recombinant protein of human hypothetical protein FLJ40235 (FLJ40235), 100 µg

Species: Human

Expression Host: HEK293T

**Expression cDNA Clone
or AA Sequence:** >RC221431 protein sequence
Red=Cloning site **Green**=Tags(s)

MLPLLQLVPAKLLNSSCSLEKTLQCSCSFHGIPTPSVQWWMGGVPVGVGDGMDGSLQVTSTMLGPWANSTI
SLTEEPENGMRLLCGKNQNGTHALSILLMSRKSSLAQAFVKGLIQGAIYAGIVIALLLFLCLLPLIVKH
IRKKQAKKAAAIRAKKSSKVRASQELEMSLKPEEPGKPVVATFSESRILEKQDKRAS

TRTRPLEQKLISEEDLAANDILDYKDDDDKV

Tag: C-Myc/DDK

Predicted MW: 21.1 kDa

Concentration: >0.05 µg/µL as determined by microplate BCA method

Purity: > 80% as determined by SDS-PAGE and Coomassie blue staining

Buffer: 25 mM Tris-HCl, 100 mM glycine, pH 7.3, 10% glycerol

Preparation: Recombinant protein was captured through anti-DDK affinity column followed by conventional chromatography steps.

Note: For testing in cell culture applications, please filter before use. Note that you may experience some loss of protein during the filtration process.

Storage: Store at -80°C.

Stability: Stable for 12 months from the date of receipt of the product under proper storage and handling conditions. Avoid repeated freeze-thaw cycles.

RefSeq: [NP_775906](#)

Locus ID: 284369

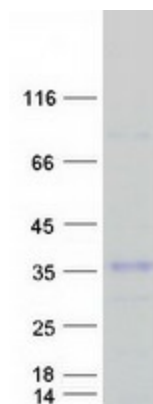
UniProt ID: [Q8N7X8](#)

RefSeq Size: 1706



[View online »](#)

Cytogenetics: 19q13.41
RefSeq ORF: 591
Synonyms: C19orf75; SIGLEC23P; SIGLECP7
Protein Families: Transmembrane

Product images:

Coomassie blue staining of purified SIGLECL1 protein (Cat# [TP321431]). The protein was produced from HEK293T cells transfected with SIGLECL1 cDNA clone (Cat# [RC221431]) using MegaTran 2.0 (Cat# [TT210002]).