

Product datasheet for TP321431L

C19orf75 (SIGLECL1) (NM_173635) Human Recombinant Protein

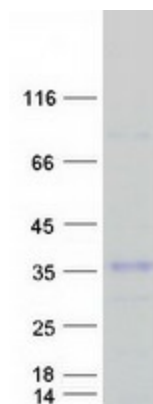
Product data:

Product Type:	Recombinant Proteins
Description:	Recombinant protein of human hypothetical protein FLJ40235 (FLJ40235), 1 mg
Species:	Human
Expression Host:	HEK293T
Expression cDNA Clone or AA Sequence:	>RC221431 protein sequence Red=Cloning site Green=Tags(s)
	MLPLLQLVPAKLLNSSCSLEKTLQCSCSFHGIPTPSVQWWMGGVPVGVGDGMDGSLQVTSTMLGPWANSTI SLTEEPENGMRLLCGKNQNGTHALSILLMSRKSSLAQAQAFVKGLIQGAIYAGIVIALLLFLCLLPLIVKH IRKKQAKKAAAIRAKKSSKVRASQELEMSLKPEEPGKPVVATFSESRIKQDKRAS
	TRTRPLEQKLISEEDLAANDILDYKDDDDKV
Tag:	C-Myc/DDK
Predicted MW:	21.1 kDa
Concentration:	>0.05 µg/µL as determined by microplate BCA method
Purity:	> 80% as determined by SDS-PAGE and Coomassie blue staining
Buffer:	25 mM Tris-HCl, 100 mM glycine, pH 7.3, 10% glycerol
Preparation:	Recombinant protein was captured through anti-DDK affinity column followed by conventional chromatography steps.
Note:	For testing in cell culture applications, please filter before use. Note that you may experience some loss of protein during the filtration process.
Storage:	Store at -80°C.
Stability:	Stable for 12 months from the date of receipt of the product under proper storage and handling conditions. Avoid repeated freeze-thaw cycles.
RefSeq:	NP_775906
Locus ID:	284369
UniProt ID:	Q8N7X8
RefSeq Size:	1706



[View online »](#)

Cytogenetics: 19q13.41
RefSeq ORF: 591
Synonyms: C19orf75; SIGLEC23P; SIGLECP7
Protein Families: Transmembrane

Product images:

Coomassie blue staining of purified SIGLECL1 protein (Cat# [TP321431]). The protein was produced from HEK293T cells transfected with SIGLECL1 cDNA clone (Cat# [RC221431]) using MegaTran 2.0 (Cat# [TT210002]).