

Product datasheet for **TP321390L**

EMA (MUC1) (NM_001018016) Human Recombinant Protein

Product data:

Product Type:	Recombinant Proteins
Description:	Recombinant protein of human mucin 1, cell surface associated (MUC1), transcript variant 2, 1 mg
Species:	Human
Expression Host:	HEK293T
Expression cDNA Clone or AA Sequence:	>RC221390 protein sequence Red =Cloning site Green =Tags(s)

MTPGTQSPFFLLLLLTLTATTAPKPATVWTGSGHASSTPGGEKETSATQRSSVPSSTEKNAFNSSLEDP
STDYYQELQRDISEMFLQIYKQGGFLGLSNIKFRPGSVVQLTLAFREGTINVHDVETQFNQYKTEAASR
YNLTISDVSVDVPPFSAQSGAGVPGWGIALLVLCVLVALAIVYLIALAVCQCRRKNYGQLDIFPARD
TYHPMSEYPTYHTHGRYVPPSSTRSPYEKVSAGNGGSSLSYTNPAVAATSANL

TRTRPLE**Q**KLISEEDLAANDILDY**K**DDDD**KV**

Tag:	C-Myc/DDK
Predicted MW:	25.1 kDa
Concentration:	>0.1 µg/µL as determined by microplate BCA method
Purity:	> 80% as determined by SDS-PAGE and Coomassie blue staining
Buffer:	25 mM Tris-HCl, 100 mM glycine, pH 7.3, 10% glycerol
Bioactivity:	ELISA capture for autoantibodies (PMID: 26960182)
Preparation:	Recombinant protein was captured through anti-DDK affinity column followed by conventional chromatography steps.
Note:	For testing in cell culture applications, please filter before use. Note that you may experience some loss of protein during the filtration process.
Storage:	Store at -80°C.
Stability:	Stable for 12 months from the date of receipt of the product under proper storage and handling conditions. Avoid repeated freeze-thaw cycles.
RefSeq:	NP_001018016



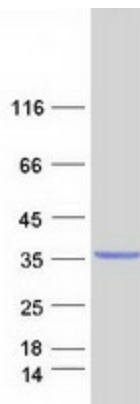
[View online »](#)

Locus ID:	4582
UniProt ID:	P15941
RefSeq Size:	1193
Cytogenetics:	1q22
RefSeq ORF:	792
Synonyms:	ADMCKD; ADMCKD1; ADTKD2; CA 15-3; CD227; EMA; H23AG; KL-6; MAM6; MCD; MCKD; MCKD1; MUC-1; MUC-1/SEC; MUC-1/X; MUC1/ZD; PEM; PEMT; PUM

Summary: This gene encodes a membrane-bound protein that is a member of the mucin family. Mucins are O-glycosylated proteins that play an essential role in forming protective mucous barriers on epithelial surfaces. These proteins also play a role in intracellular signaling. This protein is expressed on the apical surface of epithelial cells that line the mucosal surfaces of many different tissues including lung, breast stomach and pancreas. This protein is proteolytically cleaved into alpha and beta subunits that form a heterodimeric complex. The N-terminal alpha subunit functions in cell-adhesion and the C-terminal beta subunit is involved in cell signaling. Overexpression, aberrant intracellular localization, and changes in glycosylation of this protein have been associated with carcinomas. This gene is known to contain a highly polymorphic variable number tandem repeats (VNTR) domain. Alternate splicing results in multiple transcript variants.[provided by RefSeq, Feb 2011]

Protein Families: Druggable Genome, Secreted Protein, Transmembrane

Product images:



Coomassie blue staining of purified MUC1 protein (Cat# [TP321390]). The protein was produced from HEK293T cells transfected with MUC1 cDNA clone (Cat# [RC221390]) using MegaTran 2.0 (Cat# [TT210002]).