

Product datasheet for TP321387L

GOLGA3 (NM_005895) Human Recombinant Protein

Product data:

Product Type: Recombinant Proteins
Description: Recombinant protein of human golgi autoantigen, golgin subfamily a, 3 (GOLGA3), 1 mg
Species: Human
Expression Host: HEK293T
Expression cDNA Clone or AA Sequence: >RC221387 representing NM_005895
Red=Cloning site Green=Tags(s)

MDGASAEQDGLQEDRSHSGPSSLPEAPLKPPGPLVPPDQQDKVQCAEVNRASTEGESPDGPGQGGLCQNG
 PTPFPDPPSSLDPTTSPVGPDASPGVAGFHDNLRKSQGTSAEGSVRKEALQSLRSLPMQETQLCSTDS
 PLPLEKEEQVRLQARKWLEEQKQYRVKRQQERSQPATKTRLFSTLDPELMLNPNENLPRASTLAMTKEY
 SFLRTSVPRGPKVGSGLPAHPREKKTSSKIRSLADYRTEDSNAGNSGGNVPAPDSTKGSCLKQNRSSA
 ASVSEISLSPDTRDRENTSLAGDSVSEVDGNDSDSSSYSSASTRGTYGILSKTVGTQDTPYMVNGQEI
 PADTLGQFPSIKDVLQAAAAEHQDQGQEVNGEVRRRDSICSSVSLESSAAETQEEMLQVLKEKMRLEGQ
 LEALSLEASQALKEKAELQAQLAALSTKLQAQVECSHSSQQRQDSLSSEVDTLKQSCWDLERAMTDLQNM
 LEAKNASLASSNNDLQVAEEQYQLMAKVEDMQRSMLSKDNTVHDLRQQMTALQSQLQVQLERTTLTSK
 LKASQAEISSLQSVRQWYQQQLALAQEARVRLQGEMAHIQVGMQTAGLLEHLKLENVLSLQQLTETQHR
 SMKEKGRIAAQLQIEADMLDQEA AFM QIQEAKTMVEEDLQRRLEEFEGEGERERLQRMADSAASLEQQLEQ
 VKLTLQRDQQLQALQEHLDLMKQLTLTQEQALQSREQLDALQTHYDELQARLGELQGEAASREDTICL
 LQNEKIIEAALQAAKSGKEELDRGARRLEEGTEETSETLEKLREELAIKSGQVEHLQETAALKQMOK
 IKEQFLQQKVMVEAYRRDATSKDQLISELKATRKRDLSELKELRQELMQVHGEKRTAEAELSRLHREVAQ
 VRQHMAADLEGHLQSAQKERDEMETHLQSLQFDKEQMVAVTEANEALKKQIEELQEQARKAITEQKQKMRR
 LGSDLTSAQKEMKTKHKAYENAVGILSRRLQEALAAKEAADAELGQLRAQGGSSDSSLALHERIQALEAE
 LQAVSHSKTLLEKELQEVIALTSQELEESREKVLELEDELQESRGRKIKRLEESNKKLALALEHEKKG
 LTGLGQSNAALREHNSILETALAKREADLVQLNLQVQAVLQRKEEEDRQMKHLVQALQASLEKEKEKVN
 LKEQVAAAKVEAGHNRRHFKAASLESEVKKELQAKEHLVQKLQAEADDLQIREGKHSQEI AQFQAEAE
 ARAQLQLLQKQLDEQLSKQPVGNQEMENLKWVVDQKEREIQLSKQQLDLTEQQGRKELEGLQQLLNQVKS
 ELEMAQEDLSMTQKDKFMLQAKVSELKNNMKTLLQQNQQLKDLRRGAAKTRKEPKGEASSNPATPIKI
 PDCPVPASLLEELLRPPPAVSKEPLKLNLSCLQQLKQEMDSLQRQMEEHALTVHESLSSWTPLEPATASP
 VPPGGHAGPRGDPQRHSQSRASKEGPG

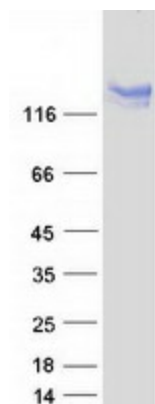
TRTRPLEQKLISEEDLAANDILDYKDDDDKV

Tag: C-Myc/DDK



[View online >](#)

Predicted MW:	167.2 kDa
Concentration:	>0.05 µg/µL as determined by microplate BCA method
Purity:	> 80% as determined by SDS-PAGE and Coomassie blue staining
Buffer:	25 mM Tris-HCl, 100 mM glycine, pH 7.3, 10% glycerol
Preparation:	Recombinant protein was captured through anti-DDK affinity column followed by conventional chromatography steps.
Note:	For testing in cell culture applications, please filter before use. Note that you may experience some loss of protein during the filtration process.
Storage:	Store at -80°C.
Stability:	Stable for 12 months from the date of receipt of the product under proper storage and handling conditions. Avoid repeated freeze-thaw cycles.
RefSeq:	NP_005886
Locus ID:	2802
UniProt ID:	Q08378
RefSeq Size:	6956
Cytogenetics:	12q24.33
RefSeq ORF:	4494
Synonyms:	GCP170; MEA-2
Summary:	<p>The Golgi apparatus, which participates in glycosylation and transport of proteins and lipids in the secretory pathway, consists of a series of stacked cisternae (flattened membrane sacs). Interactions between the Golgi and microtubules are thought to be important for the reorganization of the Golgi after it fragments during mitosis. This gene encodes a member of the golgin family of proteins which are localized to the Golgi. Its encoded protein has been postulated to play a role in nuclear transport and Golgi apparatus localization. Several alternatively spliced transcript variants that encode different protein isoforms have been described for this gene. [provided by RefSeq, Feb 2010]</p>

Product images:

Coomassie blue staining of purified GOLGA3 protein (Cat# [TP321387]). The protein was produced from HEK293T cells transfected with GOLGA3 cDNA clone (Cat# [RC221387]) using MegaTran 2.0 (Cat# [TT210002]).