

Product datasheet for TP321379

CD21 (CR2) (NM_001877) Human Recombinant Protein

Product data:

Product Type:	Recombinant Proteins
Description:	Recombinant protein of human complement component (3d/Epstein Barr virus) receptor 2 (CR2), transcript variant 2, 20 µg
Species:	Human
Expression Host:	HEK293T
Expression cDNA	>RC221379 protein sequence
Clone or AA Sequence:	Red=Cloning site Green=Tags(s)

MGAAGLLGVFLALVAPGVLGISCGSPPPILNGRISYYSTPIAVGTVIRYSCSGTFRLIGEKSLLCITKDK
VDGTWDKPAKCEYFNKYSSCEPIVPGGYKIRGSTPYRHGDSVTFACKTNFSMNGNKSVMCQANNMWGP
TRLPTCVSVFPLECPALPMIHNGHHTSENVGSIAPGLSVTYSCESGYLLVGEKIINLSSGKWSAVPPTC
EEARCKSLGRFPNGKVKEPILRVGVTANFFCDEGYRLQGPPSSRCVIAGQGVAVTKMPVCEEIFCPSPP
PILNGRHIGNSLANVSYGSIVTYTCDPDPEEGVNFILIGESTLRCTVDSQKTGTWSGPAPRCELSTSAVQ
CPHPQILRGRMVSGQKDRYTYNDTVIFACMFGFTLKGSQIRCNAGTWEPSAPVCEKECQAPPNINLNGQ
KEDRHMVRFDPGTSIKYSCNPGYVLVGEESIQCTSEGVWTPPVPQCKVAACEATGRQLLTKPQHQFVRPD
VNSSCGEGYKLSGSVYQECQGTIPWFMEIRLCKEITCPPPPVIYNGAHTGSSLEDFFPYGTTVTYTCNPGP
ERGVFSLIGESTIRCTSNDQERGTWSGPAPLCKLSLLAVQCASHVHIANGYKISGKEAPYFYNDTVTFKC
YSGFTLKGNSQIRCKADNTWDPEIPVCEKETCQHVRQSLQELPAGSRVELVNTSCQDGYQLTGAYQMCQ
DAENGIWFKKIPLCKVIHCHPPPVIVNGKHTGMMAENFLYGNEVSYECDQGFYLLGEKKLQCRSDSKGHG
SWSGPSPQCLRSPPVTRCPNPEVKHGYKLNKTHSAYSHNDIVYVDCNPGFIMNGSRVIRCHTDNTWVPGV
PTCIKKAFIGCPPPKTPNGNHTGGNIARFSPGMSILYSCDQGYLLVGEALLLCTHEGTWSQPAPHCKEV
NCSSPADMDGIQKLEPRKMYQYGAVVTECEDGYMLEGSPQSQSDHQWNPPLAVCRSRSLAPVLCGI
AAGLILLTFLIVITLYVISKHRERNYYTDSQKEAFHLEAREVYSDPYNPAS

TRTRPLEQKLISEEDLAANDILDYKDDDDKV

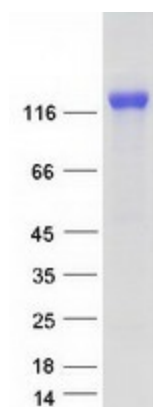
Tag:	C-Myc/DDK
Predicted MW:	111.1 kDa
Concentration:	>0.05 µg/µL as determined by microplate BCA method
Purity:	> 80% as determined by SDS-PAGE and Coomassie blue staining
Buffer:	25 mM Tris-HCl, 100 mM glycine, pH 7.3, 10% glycerol



[View online »](#)

Preparation:	Recombinant protein was captured through anti-DDK affinity column followed by conventional chromatography steps.
Note:	For testing in cell culture applications, please filter before use. Note that you may experience some loss of protein during the filtration process.
Storage:	Store at -80°C.
Stability:	Stable for 12 months from the date of receipt of the product under proper storage and handling conditions. Avoid repeated freeze-thaw cycles.
RefSeq:	NP_001868
Locus ID:	1380
UniProt ID:	P20023
RefSeq Size:	4007
Cytogenetics:	1q32.2
RefSeq ORF:	3099
Synonyms:	C3DR; CD21; CR; CVID7; SLEB9
Summary:	This gene encodes a membrane protein, which functions as a receptor for Epstein-Barr virus (EBV) binding on B and T lymphocytes. Genetic variations in this gene are associated with susceptibility to systemic lupus erythematosus type 9 (SLEB9). Alternatively spliced transcript variants encoding different isoforms have been found for this gene.[provided by RefSeq, Sep 2009]
Protein Families:	Druggable Genome, Transmembrane
Protein Pathways:	B cell receptor signaling pathway, Complement and coagulation cascades, Hematopoietic cell lineage

Product images:



Coomassie blue staining of purified CR2 protein (Cat# TP321379). The protein was produced from HEK293T cells transfected with CR2 cDNA clone (Cat# [RC221379]) using MegaTran 2.0 (Cat# [TT210002]).