

Product datasheet for TP321360M

MRC2 (NM_006039) Human Recombinant Protein

Product data:

Product Type: Recombinant Proteins
Description: Recombinant protein of human mannose receptor, C type 2 (MRC2), 100 µg
Species: Human
Expression Host: HEK293T
Expression cDNA Clone or AA Sequence: >RC221360 representing NM_006039
Red=Cloning site Green=Tags(s)

MGPGRPAPAPWPRHLLRCVLLLGCLHLGRPGAPGDAALPEPNVFLIFSHGLQGCLQAQGGQVRVTPACNT
 SLPAQRWKWVSRNRLFNLGTMQCLGTGWPNTTASLGMYECDREALNLRWHCRTLDGQLSLLLGARTSN
 ISKPGTLERGDQTRSGQWRIYGSEEDLCALPYHEVYTIQGNSHGKPKTIPFKYDNQWFHGCTSTGREDGH
 LWCATTQDYGKDERWGFCAPIKSNDCEFWDKDQLTDCYQFNQSTLSWREAWASCEQQGADLLSITEIH
 EQTYINGLLTGYSSTLWIGLNDLDTSGGWQWSDNSPLKYLNWESDQPDNPSEENCGVIRTESSGGWQNRD
 CSIALPYVCKKKPNATAEPTPPDRWANVKVECEPSWQPFQGHYRLQAEKRSWQESKKAACLRGGGDLVSI
 HSMAELEFITKQIKQEVEELWIGLNDLKLQMNFEWSDGSLVSFTHWHHPFEPNFRDSEDCVTIWGPEGR
 WNDSPCNQSLPSICKKAGQLSQGAAEEDHGCRKGTWVHSPSCYWLGEDQVTYSEARRLCTDHGSQLVITIT
 NRFEQAFVSSLIYNWEGEYFWTALQDLNSTGSFFWLSDGDEVMYTHWNRDQPGYSRGGCVALATGSAMGLW
 EVKNCTSFARYICRQSLGTPVTPPELPGDPPTSLTGSCPQGWASDTKLRYCYKVFSSERLQDKKSWVQA
 QGACQELGAQLLSLASYEEHFVANMLNKIFGESEPEIHEQHWFWIGLNRDPRGGQSWRWSGVDGFSYH
 NFDRSRHDDDIRGCAVLDLQWVAMQCDTQLDWICKIPRGTDVREPDDSPQGRREWLRFEAEYKFF
 EHHSTWAQAQRICWFQAEELTSVHSQAELDFLSHNLQKFSRAQEQHWWIGLHTSESDGRFRWTDGSIINF
 ISWAPGKPRPVGKDKKCVYMTASREDWGDQRCLTALPYICKRSNVTKETQPPDLPTTALGGCPSDWIQFL
 NKCFVQGGQEPQSRVKWSEAQFSCEQEAQLVTITNPLEQAFITASLPNVTFDLWIGLHASQRDFQWVEQ
 EPLMYANWAPGEPSPAPSGNKPTSCAVLHSPSAHFTGRWDDRSCTEETHGFICQKGTDPSPSPSPA
 ALPPAPGTELSYLNQFRLLQKPLRWHDALLLCESHNASLAYVPDYPYQAFQFLQAARGLRTPWIGLAGE
 EGSRRYSWVSEPLNYVVGWQDGEPPQGGCTYVDVDGAWRTTSCDTKLQGAVCGVSSGPPPPRRISYHGS
 CPQGLADSAWIPFREHCYSFHMELLLGHKEARQRCRAGGAVLSILDEMENVFVWEHLQSYEGQSRGAWL
 GMNFPNPKGGTLVWQDNTAVNYSNWGPPGLGSPMLSHNSCYWIQNSGLWRPGACTNITMGVVCKLPRAEQ
 SSFSPSALPENPAALVVLMVAVLLLLALLTAALILYRRRQSIERGAFEGARYSRSSSSPTEATEKNILVS
 D MEMNEQQE

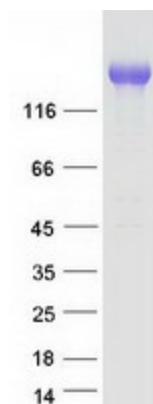
TRTRPLEQKLISEEDLAANDILDYKDDDDKV

Tag: C-Myc/DDK



[View online >](#)

| | |
|--------------------------|---------------------------------------------------------------------------------------------------------------------------------------------------------------------------------------------------------------------------------------------------------------------------------------------------------------------------------------------------------------------------------------------------------------------------------------------------------------------------------------------------------------|
| Predicted MW: | 166.5 kDa |
| Concentration: | >0.05 µg/µL as determined by microplate BCA method |
| Purity: | > 80% as determined by SDS-PAGE and Coomassie blue staining |
| Buffer: | 25 mM Tris-HCl, 100 mM glycine, pH 7.3, 10% glycerol |
| Preparation: | Recombinant protein was captured through anti-DDK affinity column followed by conventional chromatography steps. |
| Note: | For testing in cell culture applications, please filter before use. Note that you may experience some loss of protein during the filtration process. |
| Storage: | Store at -80°C. |
| Stability: | Stable for 12 months from the date of receipt of the product under proper storage and handling conditions. Avoid repeated freeze-thaw cycles. |
| RefSeq: | NP_006030 |
| Locus ID: | 9902 |
| UniProt ID: | Q9UBG0 |
| RefSeq Size: | 4700 |
| Cytogenetics: | 17q23.2 |
| RefSeq ORF: | 4437 |
| Synonyms: | CD280; CLEC13E; ENDO180; UPARAP |
| Summary: | This gene encodes a member of the mannose receptor family of proteins that contain a fibronectin type II domain and multiple C-type lectin-like domains. The encoded protein plays a role in extracellular matrix remodeling by mediating the internalization and lysosomal degradation of collagen ligands. Expression of this gene may play a role in the tumorigenesis and metastasis of several malignancies including breast cancer, gliomas and metastatic bone disease. [provided by RefSeq, Feb 2012] |
| Protein Families: | Druggable Genome, Transmembrane |

Product images:

Coomassie blue staining of purified MRC2 protein (Cat# [TP321360]). The protein was produced from HEK293T cells transfected with MRC2 cDNA clone (Cat# [RC221360]) using MegaTran 2.0 (Cat# [TT210002]).