

## Product datasheet for TP321342M

### VMAT2 (SLC18A2) (NM\_003054) Human Recombinant Protein

#### Product data:

Product Type:	Recombinant Proteins
Description:	Recombinant protein of human solute carrier family 18 (vesicular monoamine), member 2 (SLC18A2), 100 µg
Species:	Human
Expression Host:	HEK293T
Expression cDNA Clone or AA Sequence:	>RC221342 representing NM_003054 Red=Cloning site Green=Tags(s)

MALSELALVRWLQESRRSRKLLIFIVFLALLLDNMLLTVVVPIIPSYLYSIKHEKNATEIQTARPVHTAS  
ISDSFQSIFSYYDNSTMVTGNATRDLT LHQTATQHMTNNAVPSDCPSEDKDLLNENVQVGLLFASKAT  
VQLITNPIFGLLTNRIGYPIPIFAGFCIMFVSTIMFAFSSSYAFLLIARSLQGIGSSCSSVAGMGMLASV  
YTDDEERGNVMGIALGGLAMGVLVGPFGSVLYEFVVKTAPFLVLAALVLLDGAIQLFVLQPSRVQPESQ  
KGTPLTLLKDPYILIAAGSICFANMGIAMLEPALPIWMMETMCSRKWQLGVAFLPASISYLIGTNIFGI  
LAHKMGRWLCALLGMIIVGVSILCIPFAKNIYGLIAPNFGVGFAGMVDSSMMPIMGYLVDLRHVSVYGS  
VYAIADVAFCMGYAIGPSAGGAIKAIGFPWLMTIIGIIDILFAPLCFFLRSPPAKEEKMAILMDHNCP  
KTKMYTQNNIQSYPIGEDEESES

SGPTRRRRLEQKLISEEDLAANDILDYKDDDDKV

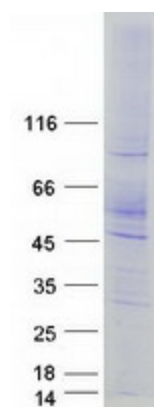
Tag:	C-Myc/DDK
Predicted MW:	55.5 kDa
Concentration:	>0.05 µg/µL as determined by microplate BCA method
Purity:	> 80% as determined by SDS-PAGE and Coomassie blue staining
Buffer:	25 mM Tris-HCl, 100 mM glycine, pH 7.3, 10% glycerol
Preparation:	Recombinant protein was captured through anti-DDK affinity column followed by conventional chromatography steps.
Note:	For testing in cell culture applications, please filter before use. Note that you may experience some loss of protein during the filtration process.
Storage:	Store at -80°C.



[View online »](#)

<b>Stability:</b>	Stable for 12 months from the date of receipt of the product under proper storage and handling conditions. Avoid repeated freeze-thaw cycles.
<b>RefSeq:</b>	<a href="#">NP_003045</a>
<b>Locus ID:</b>	6571
<b>UniProt ID:</b>	<a href="#">Q05940</a>
<b>RefSeq Size:</b>	1898
<b>Cytogenetics:</b>	10q25.3
<b>RefSeq ORF:</b>	1542
<b>Synonyms:</b>	PKDYS2; SVAT; SVMT; VAT2; VMAT2
<b>Summary:</b>	This gene encodes an transmembrane protein that functions as an ATP-dependent transporter of monoamines, such as dopamine, norepinephrine, serotonin, and histamine. This protein transports amine neurotransmitters into synaptic vesicles. Polymorphisms in this gene may be associated with schizophrenia, bipolar disorder, and other neurological/psychiatric ailments. [provided by RefSeq, Jun 2018]
<b>Protein Families:</b>	Transmembrane
<b>Protein Pathways:</b>	Parkinson's disease

### Product images:



Coomassie blue staining of purified SLC18A2 protein (Cat# [TP321342]). The protein was produced from HEK293T cells transfected with SLC18A2 cDNA clone (Cat# [RC221342]) using MegaTran 2.0 (Cat# [TT210002]).