

## Product datasheet for TP321331

### KIF3A (NM\_007054) Human Recombinant Protein

#### Product data:

Product Type:	Recombinant Proteins
Description:	Purified recombinant protein of Homo sapiens kinesin family member 3A (KIF3A), 20 µg
Species:	Human
Expression Host:	HEK293T
Expression cDNA Clone or AA Sequence:	>RC221331 representing NM_007054 Red=Cloning site Green=Tags(s)

MPINKSEKPESCDNVKVVRCRPLNEREKSMCYKQAVSVDEMRTITVHKTDSSNEPPKFTFTFDTVFGPE  
SKQLDVYNLTARPIIDSVLEGYNGTIFAYGQTGTGKTFTMEGVRAIPELRGIIPNSFAHIFGHIAKAEGD  
TRFLVRVSYLEIYNEEVRDLLGKDQQTQRLEVKERPDVGVYIKDLSAYVNNADDMDRIMTLGHKNRSVGA  
TNMNEHSSRSHAIFTITIECSEKIDGNMHVRMGKLLHVLVDLAGSERQAKTGATGQRLKEATKINLSLSTL  
GNVISALVDGKSTHVPYRNSKLTRLLQDSLGGNSKTMCMANIGPADYNYDETISTLRYANRAKNIKNKAR  
INEDPKDALLRQFQKEIEELKKLEEGEEISGSDISGSEEDDDEEGEVGEDGEKRKKRRGKKKVSPDKMI  
EMQAKIDEERKALETKLDMEEEERNKARAELEKREKDLLKAQQEHQSLLEKLSALEKKVIVGGVDLLAKA  
EEQEKLLEESNMELEERRKRAEQLRRELEEKEQERLDIEEKYTSLQEEAQGKTKLKKVWTMLMAAKSEM  
ADLQQEHQREIEGLENIRQLSRELRLQMLIIDNFIPRDYQEMIENYVHWNEDIGEWQLKCVAYTGNNMR  
KQTPVPDKKEKDPFEVDLSHVYLAYTEESLRQSLMKLERPRTSKGKARPKTGRRKRSAPKVIDSLLQ

TRTRPLEQKLISEEDLAANDILDYKDDDDKV

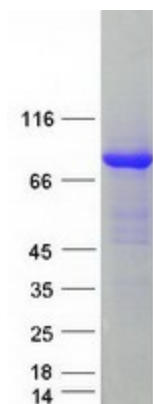
Tag:	C-Myc/DDK
Predicted MW:	79.9 kDa
Concentration:	>0.05 µg/µL as determined by microplate BCA method
Purity:	> 80% as determined by SDS-PAGE and Coomassie blue staining
Buffer:	25 mM Tris-HCl, 100 mM glycine, pH 7.3, 10% glycerol
Preparation:	Recombinant protein was captured through anti-DDK affinity column followed by conventional chromatography steps.
Note:	For testing in cell culture applications, please filter before use. Note that you may experience some loss of protein during the filtration process.
Storage:	Store at -80°C.



[View online »](#)

<b>Stability:</b>	Stable for 12 months from the date of receipt of the product under proper storage and handling conditions. Avoid repeated freeze-thaw cycles.
<b>RefSeq:</b>	<u>NP_008985</u>
<b>Locus ID:</b>	11127
<b>UniProt ID:</b>	<u>Q9Y496</u> , <u>Q05CT3</u>
<b>RefSeq Size:</b>	6257
<b>Cytogenetics:</b>	5q31.1
<b>RefSeq ORF:</b>	2097
<b>Synonyms:</b>	FLA10; KLP-20
<b>Summary:</b>	Microtubule-based anterograde translocator for membranous organelles. Plus end-directed microtubule sliding activity in vitro. Plays a role in primary cilia formation. Plays a role in centriole cohesion and subdistal appendage organization and function. Regulates the formation of the subdistal appendage via recruitment of DCTN1 to the centriole. Also required for ciliary basal feet formation and microtubule anchoring to mother centriole. [UniProtKB/Swiss-Prot Function]
<b>Protein Families:</b>	Druggable Genome

### Product images:



Coomassie blue staining of purified KIF3A protein (Cat# TP321331). The protein was produced from HEK293T cells transfected with KIF3A cDNA clone (Cat# [RC221331]) using MegaTran 2.0 (Cat# [TT210002]).