

## Product datasheet for TP321297L

### CD11a (ITGAL) (NM\_002209) Human Recombinant Protein

#### Product data:

Product Type:	Recombinant Proteins
Description:	Recombinant protein of human integrin, alpha L (antigen CD11A (p180), lymphocyte function-associated antigen 1; alpha polypeptide) (ITGAL), transcript variant 1, 1 mg
Species:	Human
Expression Host:	HEK293T
Expression cDNA Clone or AA Sequence:	>RC221297 representing NM_002209 Red=Cloning site Green=Tags(s)

MKDSCITVMAMALLSGFFFFAPASSYNLDVRGARSFSPPRAGRHFYRVLQVGNQVIVGAPGEGNSTGSL  
YQCQSGTGHCPLVTLRGSNYTSKYLGMTLATDPTDGSILACDPGLSRTCDQNTYLSGLCYLFRQNLRQGM  
LQGRPGFQECIKGNVDLVFLFDGMSLQPDFEQKILDFMKDVMKKLSNTSYQFAAVQFSTSYKTEFDFSD  
YVKKRDPDALLKHVKHMLLLTNTFGAINYVATEVFREELGARPDATKVLIIITDGEATDSGNIDAAKDII  
RYIIGIGKHFQTKESQETLHKFASKPASEFVKILDTFEKLDLFTLQKKIYVIEGTSKQDLTSFNMELS  
SSGISADLSRGHAVVGAVGAKDWAGGFLDLKADLQDDTFIGNEPLTPEVRAGYLGTYVTWLPQRKTSLL  
ASGAPRYQHMGRVLLFQEPQGGGHWSVQVQTIHGTQIGSYFGGELCGVDVDQDGETELLIGAPLFYGEQR  
GGRVFIYQRRQLGFEEVSELQGDPGYPLGRFGEAITALTDINGDGLVDVAVGAPLEEQGAIVIFNGRHGG  
LSPQPSQRIEGTQVLSGIQWFGRSIHGVKDLEGDGLADVAVGAESQMIVLSSRPVDMVTLMSFSPAEIP  
VHEVECSYSTSNMKKEGVNITICFQIKSLIPQFQGRVLNLTYYTLQLDGHRTRRRGLFPGGRHELRRNIA  
VTTSMCTDFSFPVQDLISPINVSLNFSLWEEEGTPRDQRAQGKDIPPIRLPSLHSETWEIPFEKN  
CGEDKKCEANLRVSFSPARSRALRLTAFASLSVELSLSNLEEDAYWVQLDLHFPPGLSFRKVEMLKPHSQ  
IPVSCEELPEESRLLSRALSCNVSSPIFKAGHSVALQMMFNLTVNSSWGDSVELHANVTCNNEEDSDLLED  
NSATTIIPILYPINILIQDQEDSTLYVSFTPKGPKIHQVKHMYQVRIQPSIHDHNIPTLEAVGVPPPS  
EGPITHQWSVQMEPPVPCYEDLERLPDAAECLPGALFRCPVFRQEILVQVIGTLELVGEIEASSMFS  
LCSSLSISFNSSKHFHLYGSNASLAQVVMKVDVWYEQMLYLVLSGIGGLLLLLLIFIVLYKVGFFKRN  
LKEKMEAGRGPNGIPAEDSEQLASGQEAGDPGCLKPLHEKDSSESGGGKD

TRTRPLEQKLISEEDLAANDILDYKDDDDKV

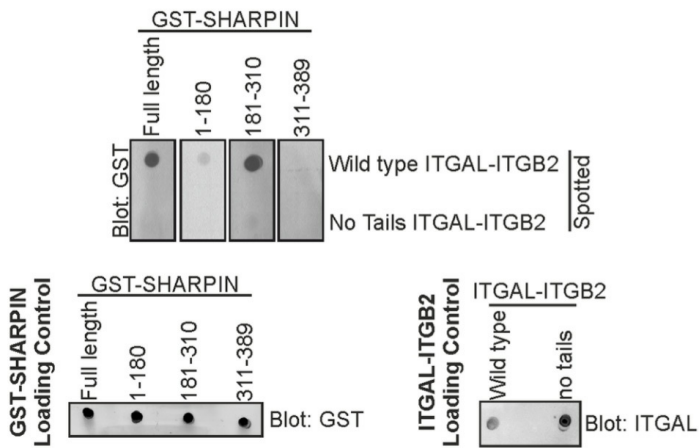
Tag:	C-Myc/DDK
Predicted MW:	126.1 kDa
Concentration:	>0.05 µg/µL as determined by microplate BCA method
Purity:	> 80% as determined by SDS-PAGE and Coomassie blue staining



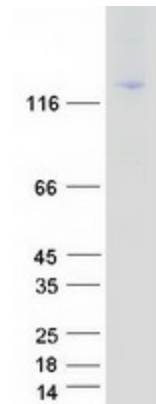
[View online »](#)

<b>Buffer:</b>	25 mM Tris-HCl, 100 mM glycine, pH 7.3, 10% glycerol
<b>Bioactivity:</b>	Far-Western blot (PMID: <a href="#">26600301</a> )
<b>Preparation:</b>	Recombinant protein was captured through anti-DDK affinity column followed by conventional chromatography steps.
<b>Note:</b>	For testing in cell culture applications, please filter before use. Note that you may experience some loss of protein during the filtration process.
<b>Storage:</b>	Store at -80°C.
<b>Stability:</b>	Stable for 12 months from the date of receipt of the product under proper storage and handling conditions. Avoid repeated freeze-thaw cycles.
<b>RefSeq:</b>	<a href="#">NP_002200</a>
<b>Locus ID:</b>	3683
<b>UniProt ID:</b>	<a href="#">P20701</a> , <a href="#">B2RAL6</a>
<b>RefSeq Size:</b>	5133
<b>Cytogenetics:</b>	16p11.2
<b>RefSeq ORF:</b>	3510
<b>Synonyms:</b>	CD11A; LFA-1; LFA1A
<b>Summary:</b>	ITGAL encodes the integrin alpha L chain. Integrins are heterodimeric integral membrane proteins composed of an alpha chain and a beta chain. This I-domain containing alpha integrin combines with the beta 2 chain (ITGB2) to form the integrin lymphocyte function-associated antigen-1 (LFA-1), which is expressed on all leukocytes. LFA-1 plays a central role in leukocyte intercellular adhesion through interactions with its ligands, ICAMs 1-3 (intercellular adhesion molecules 1 through 3), and also functions in lymphocyte costimulatory signaling. Two transcript variants encoding different isoforms have been found for this gene. [provided by RefSeq, Jul 2008]
<b>Protein Families:</b>	Druggable Genome, ES Cell Differentiation/IPS, Transmembrane
<b>Protein Pathways:</b>	Cell adhesion molecules (CAMs), Leukocyte transendothelial migration, Natural killer cell mediated cytotoxicity, Regulation of actin cytoskeleton, Viral myocarditis

**Product images:**



The UBL domain (181-310) of SHARPIN mediates its binding to cytoplasmic tails of integrin, as analyzed by Far-Western of GST-SHARPIN (full-length or fragments) binding to full-length ITGAL-ITGB2 (OriGene [TP321297] and [TP326157]) or ITGAL-ITGB2 lacking both cytoplasmic tails. Loading controls for GST-SHARPIN (full-length or fragments) and both ITGAL-ITGB2s are shown. Figure cited from PLoS ONE, PMID: 26600301



Coomassie blue staining of purified ITGAL protein (Cat# [TP321297]). The protein was produced from HEK293T cells transfected with ITGAL cDNA clone (Cat# [RC221297]) using MegaTran 2.0 (Cat# [TT210002]).