

Product datasheet for TP321272

NCKAP5 (NM_207481) Human Recombinant Protein

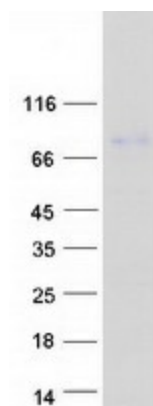
Product data:

Product Type:	Recombinant Proteins
Description:	Recombinant protein of human Nck-associated protein 5 (NAP5), transcript variant 2, 20 µg
Species:	Human
Expression Host:	HEK293T
Expression cDNA Clone or AA Sequence:	>RC221272 representing NM_207481 Red =Cloning site Green =Tags(s)
	<p>MEGKRQLEKRDVFGKRLSLDSSLVVEYMDSNKYIEHLLTQLEEQRSLWREKLAVARLQREVAQRTSEGAMH EKLIHELEERHLRLQSEKRLQEVTLSESRNRIQMRSLLQQQFSRMEETVRNLLQSQGSPEQKKEETVNIM VYQEKLSSEERKHKEALEDLHMVDEDSRSESSSTDEGKEKTKLLLERLKALEAENSALALENENQREQY ERCLDEVANQVVQALLTQKDLREECVKLKTRVFDLEQQNRTLSILFQQRVPTSDLLLQKLHSRLLDLSS GDLLSEVERNRSLTQSRTDAEVHEHQLNTKSALKCPGLGAVIPGHLCPRNSYSSSELSLSTCSEYSSG SSYTWHDGKNLRKRVKEANENLQEDDDAVADSVFQSHIIESNCQMRTLDSGIGTFPLPDSGNRSTGRYL CQPDSPEDAEP LLPQSALS AVSSMRAQTLEREVPSSTDGQRPADSAIVHSTSDPIMTARGMRPLQSR LP KPASSGKVSSQKQNEAEP RPQTCS SFGYAEDPMASQPLPDWGSEVAATGTQDKAPRMCTYSASGGNSDS LDYGDNGFGAGRGQLVKALKSAAPEIETT</p> <p>TRTRPLEQKLISEEDLAANDILDYKDDDDKV</p>
Tag:	C-Myc/DDK
Predicted MW:	66.2 kDa
Concentration:	>0.05 µg/µL as determined by microplate BCA method
Purity:	> 80% as determined by SDS-PAGE and Coomassie blue staining
Buffer:	25 mM Tris-HCl, 100 mM glycine, pH 7.3, 10% glycerol
Preparation:	Recombinant protein was captured through anti-DDK affinity column followed by conventional chromatography steps.
Note:	For testing in cell culture applications, please filter before use. Note that you may experience some loss of protein during the filtration process.
Storage:	Store at -80°C.



[View online »](#)

Stability:	Stable for 12 months from the date of receipt of the product under proper storage and handling conditions. Avoid repeated freeze-thaw cycles.
RefSeq:	NP_997364
Locus ID:	344148
UniProt ID:	O14513
RefSeq Size:	3654
Cytogenetics:	2q21.2
RefSeq ORF:	1770
Synonyms:	ERIH1; ERIH2; NAP5

Product images:

Coomassie blue staining of purified NCKAP5 protein (Cat# TP321272). The protein was produced from HEK293T cells transfected with NCKAP5 cDNA clone (Cat# [RC221272]) using MegaTran 2.0 (Cat# [TT210002]).