

Product datasheet for **TP321269M**

SMYD1 (NM_198274) Human Recombinant Protein

Product data:

Product Type: Recombinant Proteins

Description: Recombinant protein of human SET and MYND domain containing 1 (SMYD1), 100 µg

Species: Human

Expression Host: HEK293T

Expression cDNA Clone or AA Sequence: >RC221269 protein sequence
Red=Cloning site **Green**=Tags(s)

MTIGRMENVEVFTAEGKGRGLKATKEFWAADIIFAERAYSAVVFDSLNVFVCHTCFKRQEKLHRCGQCKF
AHYCDRTCQKDAWLNHKNECSAIKRYGKVPNENIRLAARIMWRVEREGTGLTEGCLVSVDDLQNHVEHFG
EEEQKDLRVDVDTFLQYWPPQSQQFSMQYISHIFGVINCNGFTLSDQRGLQAVGVGIFPNLGLVNHDCWP
NCTVIFNNGNHEAVKSMFHTQMRIELRALGKISEGEELTVSYIDFLNVSEERKRQLKKQYYFDCTCEHCQ
KKLKDDLFLGVKDNPKPSQEVKEMIQFSKDTLEKIDKARSEGLYHEVVKLCRECLEKQEPVFADTNIYM
LRMLSIVSEVLSYLQAFEEASFYARRMVDGYMKLYHPNNAQLGMAVMRAGLTNWHAGNIEVGHGMICKAY
AILLVTHGSPHPITKDLEAMRVQTEMELRMFRQNEFMYYKMREAALNNQPMQVMAEPSNEPSPALFHKKQ

TRTRPLEQKLISEEDLAANDILDYKDDDDKV

Tag: C-Myc/DDK

Predicted MW: 56.4 kDa

Concentration: >0.05 µg/µL as determined by microplate BCA method

Purity: > 80% as determined by SDS-PAGE and Coomassie blue staining

Buffer: 25 mM Tris-HCl, 100 mM glycine, pH 7.3, 10% glycerol

Preparation: Recombinant protein was captured through anti-DDK affinity column followed by conventional chromatography steps.

Note: For testing in cell culture applications, please filter before use. Note that you may experience some loss of protein during the filtration process.

Storage: Store at -80°C.

Stability: Stable for 12 months from the date of receipt of the product under proper storage and handling conditions. Avoid repeated freeze-thaw cycles.

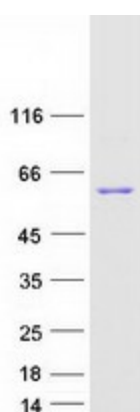
RefSeq: [NP_938015](#)



[View online »](#)

Locus ID:	150572
UniProt ID:	Q8NB12 , Q5HYE8
RefSeq Size:	4441
Cytogenetics:	2p11.2
RefSeq ORF:	1470
Synonyms:	BOP; KMT3D; ZMYND18; ZMYND22
Summary:	Methylates histone H3 at 'Lys-4' (H3K4me), seems able to perform both mono-, di-, and trimethylation. Acts as a transcriptional repressor. Essential for cardiomyocyte differentiation and cardiac morphogenesis.[UniProtKB/Swiss-Prot Function]
Protein Families:	Druggable Genome

Product images:



Coomassie blue staining of purified SMYD1 protein (Cat# [TP321269]). The protein was produced from HEK293T cells transfected with SMYD1 cDNA clone (Cat# [RC221269]) using MegaTran 2.0 (Cat# [TT210002]).