

Product datasheet for TP321269L

SMYD1 (NM_198274) Human Recombinant Protein

Product data:

Product Type:	Recombinant Proteins
Description:	Recombinant protein of human SET and MYND domain containing 1 (SMYD1), 1 mg
Species:	Human
Expression Host:	HEK293T
Expression cDNA Clone or AA Sequence:	>RC221269 protein sequence Red=Cloning site Green=Tags(s)

MTIGRMENVEVFTAEGKGRGLKATKEFWAADIIFAERAYSAVVFDSLNVFVCHTCFKRQEKLHRCGQCKF
AHYCDRTCQKDAWLNHKNESAIKRYGKVPNENIRLAARIMWRVEREGTGLTEGCLVSVDDLQNHVEHFG
EEEQKDLRVDVDTFLQYWPPQSQQFSMQYISHIFGVINCNGFTLSDQRGLQAVGVGIFPNLGLVNHDCWP
NCTVIFNNGNHEAVKSMFHTQMRIELRALGKISEGEELTVSYIDFLNVSEERKRQLKKQYYFDCTCEHCQ
KKLKDDLFLGVKDNPKPSQEVVKEMIQFSKDTLEKIDKARSEGLYHEVVKLCRECLEKQEPVFADTNIYM
LRMLSIVSEVLSYLQAFEEASFYARRMVDGYMKLYHPNNAQLGMAVMRAGLTNWHAGNIEVGHGMICKAY
AILLVTHGSPHPITKDLEAMRVQTEMELRMFRQNEFMYYKMREAALNNQPMQVMAEPSNEPSPALFHKKQ

TRTRPLEQKLISEEDLAANDILDYKDDDDKV

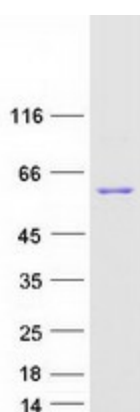
Tag:	C-Myc/DDK
Predicted MW:	56.4 kDa
Concentration:	>0.05 µg/µL as determined by microplate BCA method
Purity:	> 80% as determined by SDS-PAGE and Coomassie blue staining
Buffer:	25 mM Tris-HCl, 100 mM glycine, pH 7.3, 10% glycerol
Preparation:	Recombinant protein was captured through anti-DDK affinity column followed by conventional chromatography steps.
Note:	For testing in cell culture applications, please filter before use. Note that you may experience some loss of protein during the filtration process.
Storage:	Store at -80°C.
Stability:	Stable for 12 months from the date of receipt of the product under proper storage and handling conditions. Avoid repeated freeze-thaw cycles.
RefSeq:	NP_938015



[View online »](#)

Locus ID:	150572
UniProt ID:	Q8NB12 , Q5HYE8
RefSeq Size:	4441
Cytogenetics:	2p11.2
RefSeq ORF:	1470
Synonyms:	BOP; KMT3D; ZMYND18; ZMYND22
Summary:	Methylates histone H3 at 'Lys-4' (H3K4me), seems able to perform both mono-, di-, and trimethylation. Acts as a transcriptional repressor. Essential for cardiomyocyte differentiation and cardiac morphogenesis.[UniProtKB/Swiss-Prot Function]
Protein Families:	Druggable Genome

Product images:



Coomassie blue staining of purified SMYD1 protein (Cat# [TP321269]). The protein was produced from HEK293T cells transfected with SMYD1 cDNA clone (Cat# [RC221269]) using MegaTran 2.0 (Cat# [TT210002]).