

Product datasheet for **TP321264L**

EEF1B2 (NM_001959) Human Recombinant Protein

Product data:

Product Type:	Recombinant Proteins
Description:	Recombinant protein of human eukaryotic translation elongation factor 1 beta 2 (EEF1B2), transcript variant 1, 1 mg
Species:	Human
Expression Host:	HEK293T
Expression cDNA Clone or AA Sequence:	>RC221264 representing NM_001959 Red =Cloning site Green =Tags(s)

MGFGDLKSPAGLQVLNDYLADKSYIEGYVPSQADVAVFEAVSSPPPADLCHALRWYNHIKSYEKEKASLP
GVKKALGKYGPADVEDTTGSGATDSKDDDDIDLFGSDDEEESEEAKRLREERLAQYESKKAKKPALVAKS
SILLDVKPWDEETDMAKLEECVRSIQADGLVWGSSKLPVGYGIKKLQIQCVWEDDKVGTDMLEEQITAF
EDYVQSM DVAAFNKI

TRTRPLEQKLISEEDLAANDILDYKDDDDKV

Tag:	C-Myc/DDK
Predicted MW:	24.6 kDa
Concentration:	>0.05 µg/µL as determined by microplate BCA method
Purity:	> 80% as determined by SDS-PAGE and Coomassie blue staining
Buffer:	25 mM Tris-HCl, 100 mM glycine, pH 7.3, 10% glycerol
Bioactivity:	Biolayer interferometry (BLI) assay (PMID: 26624286)
Preparation:	Recombinant protein was captured through anti-DDK affinity column followed by conventional chromatography steps.
Note:	For testing in cell culture applications, please filter before use. Note that you may experience some loss of protein during the filtration process.
Storage:	Store at -80°C.
Stability:	Stable for 12 months from the date of receipt of the product under proper storage and handling conditions. Avoid repeated freeze-thaw cycles.
RefSeq:	NP_001950

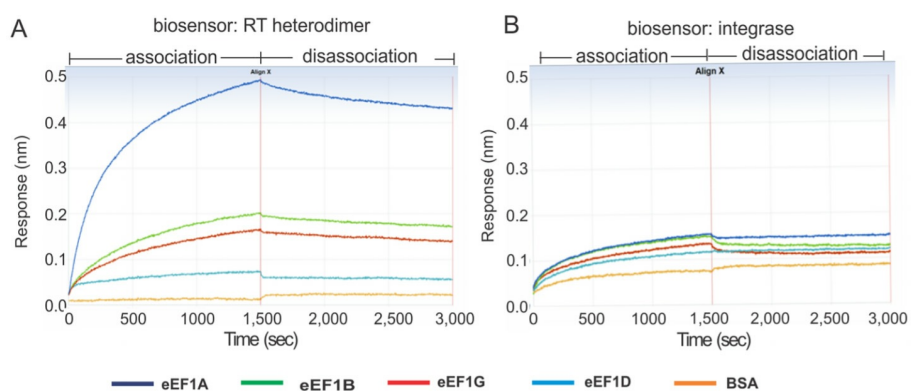


[View online »](#)

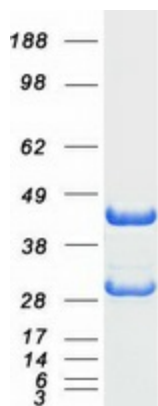
Locus ID: 1933
UniProt ID: [P24534](#), [A0A024R3W7](#)
RefSeq Size: 961
Cytogenetics: 2q33.3
RefSeq ORF: 675
Synonyms: EEF1B; EEF1B1; EF1B

Summary: This gene encodes a translation elongation factor. The protein is a guanine nucleotide exchange factor involved in the transfer of aminoacylated tRNAs to the ribosome. Alternative splicing results in three transcript variants which differ only in the 5' UTR. [provided by RefSeq, Jul 2008]

Product images:



Biolayer interferometry assays (BLI) of a biotinylated HIV RTp66/p51-loaded or integrase-loaded biosensor with 60 nM of purified eEF1A (OriGene [TP309697]), eEF1B (OriGene [TP321264]), eEF1D (OriGene [TP303202]), eEF1G (OriGene [TP319578]) or BSA as analytes. Figure cited from PLoS Pathog, PMID: 26624286



Coomassie blue staining of purified EEF1B2 protein (Cat# [TP321264]). The protein was produced from HEK293T cells transfected with EEF1B2 cDNA clone (Cat# [RC221264]) using MegaTran 2.0 (Cat# [TT210002]).