

## Product datasheet for **TP321264**

### EEF1B2 (NM\_001959) Human Recombinant Protein

#### Product data:

Product Type:	Recombinant Proteins
Description:	Recombinant protein of human eukaryotic translation elongation factor 1 beta 2 (EEF1B2), transcript variant 1, 20 µg
Species:	Human
Expression Host:	HEK293T
Expression cDNA Clone or AA Sequence:	>RC221264 representing NM_001959 <b>Red</b> =Cloning site <b>Green</b> =Tags(s)

MGFGDLKSPAGLQVLNDYLADKSYIEGYVPSQADVAVFEAVSSPPPADLCHALRWYNHIKSYEKEKASLP  
GVKKALGKYGPADVEDTTGSGATDSKDDDDIDLFGSDDEEESEEAKRLREERLAQYESKKAKKPALVAKS  
SILLDVKPWDEETDMAKLEECVRSIQADGLVWGSSKLVPGYGIKKLQIQCVWEDDKVGTDMLEEQITAF  
EDYVQSM DVAAFNKI

**TR**TRPLEQKLISEEDLAANDILDYKDDDDKV

Tag:	C-Myc/DDK
Predicted MW:	24.6 kDa
Concentration:	>0.05 µg/µL as determined by microplate BCA method
Purity:	> 80% as determined by SDS-PAGE and Coomassie blue staining
Buffer:	25 mM Tris-HCl, 100 mM glycine, pH 7.3, 10% glycerol
Bioactivity:	Biolayer interferometry (BLI) assay (PMID: <a href="https://pubmed.ncbi.nlm.nih.gov/26624286/">26624286</a> )
Preparation:	Recombinant protein was captured through anti-DDK affinity column followed by conventional chromatography steps.
Note:	For testing in cell culture applications, please filter before use. Note that you may experience some loss of protein during the filtration process.
Storage:	Store at -80°C.
Stability:	Stable for 12 months from the date of receipt of the product under proper storage and handling conditions. Avoid repeated freeze-thaw cycles.
RefSeq:	<a href="https://ncbi.nlm.nih.gov/RefSeq/ accession/NP_001950">NP_001950</a>

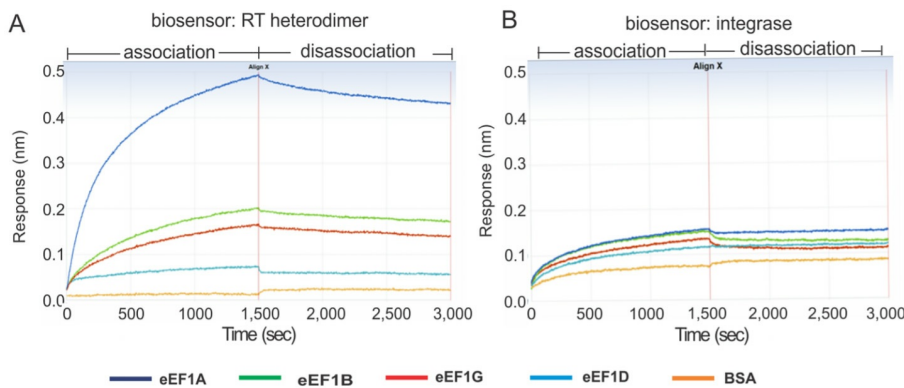


[View online »](#)

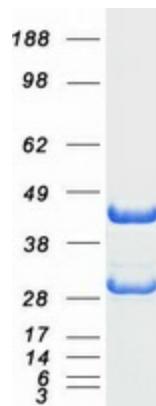
**Locus ID:** 1933  
**UniProt ID:** [P24534](#), [A0A024R3W7](#)  
**RefSeq Size:** 961  
**Cytogenetics:** 2q33.3  
**RefSeq ORF:** 675  
**Synonyms:** EEF1B; EEF1B1; EF1B

**Summary:** This gene encodes a translation elongation factor. The protein is a guanine nucleotide exchange factor involved in the transfer of aminoacylated tRNAs to the ribosome. Alternative splicing results in three transcript variants which differ only in the 5' UTR. [provided by RefSeq, Jul 2008]

### Product images:



Biolayer interferometry assays (BLI) of a biotinylated HIV RTp66/p51-loaded or integrase-loaded biosensor with 60 nM of purified eEF1A (OriGene [TP309697]), eEF1B (OriGene TP321264), eEF1D (OriGene [TP303202]), eEF1G (OriGene [TP319578]) or BSA as analytes. Figure cited from PLoS Pathog, PMID: 26624286



Coomassie blue staining of purified EEF1B2 protein (Cat# TP321264). The protein was produced from HEK293T cells transfected with EEF1B2 cDNA clone (Cat# [RC221264]) using MegaTran 2.0 (Cat# [TT210002]).