

## Product datasheet for TP321254M

### Tryptophan Hydroxylase (TPH1) (NM\_004179) Human Recombinant Protein

#### Product data:

Product Type:	Recombinant Proteins
Description:	Recombinant protein of human tryptophan hydroxylase 1 (TPH1), 100 µg
Species:	Human
Expression Host:	HEK293T
Expression cDNA Clone or AA Sequence:	>RC221254 representing NM_004179 Red=Cloning site Green=Tags(s)
	<p>MIEDNKENKDHSLEGRASLIFSLKNEVGGLIKALKIFQEKHVNLLHIESRKSRRNSEFEIFVDCDINR EQLNDIFHLLKSHTNVLSVNLDPDNFTLKEDGMETVPWFPPKISDLHDCANRVLMYGSELDADHPGFKDNV YRKRKYFADLAMNYKHGDPIPKVEFTTEEEIKTWGTVFQELNKLYPTHACREYLKLNPLLSKYCGYREDN IPQLEDVSNFLKERTGFSIRPVAGYLSRDFLSGLAFRVFCTQYVRHSSDPFYTPEDTCELLGHVPL LAEPSFAQFSQEIGLASLGASEEAVQKLATCYFFTVEFGLCKQDGGQLRVFGAGLLSSISELKHALS GHAK VKPFDPKITCKQECLITTFQDVYFVSESFEDAKEKMREFTKTIKRPFGVKYNPYTRSIQILKDTKSITSA MNELQHDLDVSDALAKVSRKPSI</p> <p>TRTRPLEQKLISEEDLAANDILDYKDDDDKV</p>
Tag:	C-Myc/DDK
Predicted MW:	50.8 kDa
Concentration:	>0.05 µg/µL as determined by microplate BCA method
Purity:	> 80% as determined by SDS-PAGE and Coomassie blue staining
Buffer:	25 mM Tris-HCl, 100 mM glycine, pH 7.3, 10% glycerol
Preparation:	Recombinant protein was captured through anti-DDK affinity column followed by conventional chromatography steps.
Note:	For testing in cell culture applications, please filter before use. Note that you may experience some loss of protein during the filtration process.
Storage:	Store at -80°C.
Stability:	Stable for 12 months from the date of receipt of the product under proper storage and handling conditions. Avoid repeated freeze-thaw cycles.
RefSeq:	<a href="#">NP_004170</a>



[View online »](#)

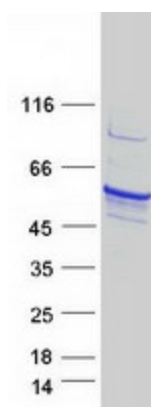
Locus ID: 7166  
UniProt ID: [P17752](#)  
RefSeq Size: 1335  
Cytogenetics: 11p15.1  
RefSeq ORF: 1332  
Synonyms: TPRH; TRPH

**Summary:** This gene encodes a member of the aromatic amino acid hydroxylase family. The encoded protein catalyzes the first and rate limiting step in the biosynthesis of serotonin, an important hormone and neurotransmitter. Mutations in this gene have been associated with an elevated risk for a variety of diseases and disorders, including schizophrenia, somatic anxiety, anger-related traits, bipolar disorder, suicidal behavior, addictions, and others.[provided by RefSeq, Apr 2009]

**Protein Families:** Druggable Genome

**Protein Pathways:** Metabolic pathways, Tryptophan metabolism

### Product images:



Coomassie blue staining of purified TPH1 protein (Cat# [TP321254]). The protein was produced from HEK293T cells transfected with TPH1 cDNA clone (Cat# [RC221254]) using MegaTran 2.0 (Cat# [TT210002]).