

## Product datasheet for **TP321250L**

### CPNE5 (NM\_020939) Human Recombinant Protein

#### Product data:

Product Type:	Recombinant Proteins
Description:	Recombinant protein of human copine V (CPNE5), 1 mg
Species:	Human
Expression Host:	HEK293T
Expression cDNA Clone or AA Sequence:	>RC221250 representing NM_020939 <b>Red</b> =Cloning site <b>Green</b> =Tags(s)

MEQPEDMASLSEFDSLGSIPATKVEITVSCRNLLDKDMFSKSDPLCVMYTQGMENKQWREFGRTEVIDN  
TLNPDFVRKFIVDYFFEEKQNLRFDLVDVSKSPDLSKHDFLGQAFCTLGEIVGSPGSRLEKPLTIGAFS  
LNSRTGKPMPPAVSNGGVPKGKCGTIILSAEELSNCRDVATMQFCANKLDKKDFFGKSDPFLVFYRSNEDG  
TFTICHKTEVMKNTLNPVWQTFIPVRALCNGDYDRTIKVEYDWDGSHDFIGFTTSYRELARGQSQ  
FNIYEVVNPKKMKKKKYVNSGTVTLTSLFAVESECTFLDYIKGGTQINFTVAIDFTASNGNPSQSTSLHY  
MSPYQLNAYALALTAVGEIIQHYDSKMFALGFGAKLPPDGRVSHEFPLNGNQENPSCCGIDGILEAYH  
RSLRTVQLYGPTNFAPVTHVARNAAAVQDGSQYSVLLITDGVISDMAQTKEAIVNAAKLPMIIIVGV  
GQAEFDAMVELDGDVRISSRGKLAERDIVQVFPFRDYVDRTGNHVLMSMARLARDVLAEPDQLVSYMKA  
QGIRPRPPPAAPTHSPSQSPARTPPASPLHTHI

**TRTRPLEQKLISEEDLAANDILDYKDDDDKV**

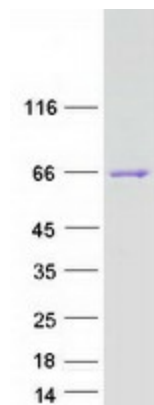
Tag:	C-Myc/DDK
Predicted MW:	65.6 kDa
Concentration:	>0.05 µg/µL as determined by microplate BCA method
Purity:	> 80% as determined by SDS-PAGE and Coomassie blue staining
Buffer:	25 mM Tris-HCl, 100 mM glycine, pH 7.3, 10% glycerol
Preparation:	Recombinant protein was captured through anti-DDK affinity column followed by conventional chromatography steps.
Note:	For testing in cell culture applications, please filter before use. Note that you may experience some loss of protein during the filtration process.
Storage:	Store at -80°C.



[View online »](#)

<b>Stability:</b>	Stable for 12 months from the date of receipt of the product under proper storage and handling conditions. Avoid repeated freeze-thaw cycles.
<b>RefSeq:</b>	<u><a href="#">NP_065990</a></u>
<b>Locus ID:</b>	57699
<b>UniProt ID:</b>	<u><a href="#">Q9HCH3</a></u>
<b>RefSeq Size:</b>	3339
<b>Cytogenetics:</b>	6p21.2
<b>RefSeq ORF:</b>	1779
<b>Synonyms:</b>	COPN5; CPN5
<b>Summary:</b>	Calcium-dependent membrane-binding proteins may regulate molecular events at the interface of the cell membrane and cytoplasm. This gene is one of several genes that encode a calcium-dependent protein containing two N-terminal type II C2 domains and an integrin A domain-like sequence in the C-terminus. Several alternatively spliced transcript variants encoding different isoforms have been found for this gene. More variants may exist, but their full-length natures could not be determined. [provided by RefSeq, Sep 2015]

### Product images:



Coomassie blue staining of purified CPNE5 protein (Cat# [TP321250]). The protein was produced from HEK293T cells transfected with CPNE5 cDNA clone (Cat# [RC221250]) using MegaTran 2.0 (Cat# [TT210002]).