

## Product datasheet for TP321216M

### LAMP2 (NM\_002294) Human Recombinant Protein

#### Product data:

Product Type:	Recombinant Proteins
Description:	Recombinant protein of human lysosomal-associated membrane protein 2 (LAMP2), transcript variant A, 100 µg
Species:	Human
Expression Host:	HEK293T
Expression cDNA Clone or AA Sequence:	>RC221216 representing NM_002294 Red=Cloning site Green=Tags(s)

MVCFRLFPVPGSGLVLVCLVLGAVRSYALELNLTDSENATCLYAKWQMNFTVRYETTNNKTYKTVTISDHG  
TVTYNGSICGDDQNGPKIAVQFGPGFSWIANFTKAASTYSIDSVSFSYNTGDNTTFPDAEDKGLTVDL  
LAIRIPLNDLFRCSLSTLEKNDVQHYWDVLVQAFVQNGTVSTNEFLCDKDKTSTVAPTIHTTVSPPTT  
TPTPEKPEAGTYSVNNGNDTCLLATMGLQLNITQDKVASVININPNTTHSTGSCRSHALLRLNSSTIK  
YLDFVFAVKNENRFYLKEVNISMVYLVNGSVFSIANNLSYWDAPLGSSYMCNKEQTVSVSGAFQINTFDL  
RVQPFNVTQGKYSTAQDCSADDDNFLVPIAVGAALAGVLILVLLAYFIGLKHGGHAGYEQF

TRTRPLEQKLISEEDLAANDILDYKDDDDKV

Tag:	C-Myc/DDK
Predicted MW:	42 kDa
Concentration:	>0.05 µg/µL as determined by microplate BCA method
Purity:	> 80% as determined by SDS-PAGE and Coomassie blue staining
Buffer:	25 mM Tris-HCl, 100 mM glycine, pH 7.3, 10% glycerol
Preparation:	Recombinant protein was captured through anti-DDK affinity column followed by conventional chromatography steps.
Note:	For testing in cell culture applications, please filter before use. Note that you may experience some loss of protein during the filtration process.
Storage:	Store at -80°C.
Stability:	Stable for 12 months from the date of receipt of the product under proper storage and handling conditions. Avoid repeated freeze-thaw cycles.
RefSeq:	<u><a href="#">NP_002285</a></u>



[View online >](#)

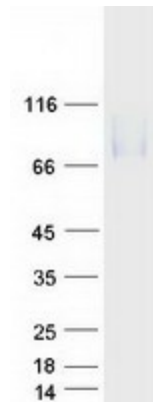
Locus ID: 3920  
UniProt ID: [P13473](#)  
RefSeq Size: 1868  
Cytogenetics: Xq24  
RefSeq ORF: 1230  
Synonyms: CD107b; DND; LAMP-2; LAMPB; LGP-96; LGP110

**Summary:** The protein encoded by this gene is a member of a family of membrane glycoproteins. This glycoprotein provides selectins with carbohydrate ligands. It may play a role in tumor cell metastasis. It may also function in the protection, maintenance, and adhesion of the lysosome. Alternative splicing of this gene results in multiple transcript variants encoding distinct proteins. [provided by RefSeq, Jul 2008]

**Protein Families:** Druggable Genome, ES Cell Differentiation/IPS, Transmembrane

**Protein Pathways:** Lysosome

### Product images:



Coomassie blue staining of purified LAMP2 protein (Cat# [TP321216]). The protein was produced from HEK293T cells transfected with LAMP2 cDNA clone (Cat# [RC221216]) using MegaTran 2.0 (Cat# [TT210002]).