

## Product datasheet for **TP321214M**

### alpha Lactalbumin (LALBA) (NM\_002289) Human Recombinant Protein

#### Product data:

Product Type:	Recombinant Proteins
Description:	Recombinant protein of human lactalbumin, alpha- (LALBA), 100 µg
Species:	Human
Expression Host:	HEK293T
Expression cDNA Clone or AA Sequence:	>RC221214 representing NM_002289 <b>Red</b> =Cloning site <b>Green</b> =Tags(s)  MRFFVPLFLVGILFPAILAKQFTKCELSQLLKDIDGYGGIALPELICTMFHTSGYDTQAIVENNESTEYGLFQISNKLWCKSSQVPQSRNICDISCDKFLDDDITDDIMCAKKILDIKGIDYWLAHKALCTEKLEQWLCEKL  <b>TRTRPLEQKLISEEDLAANDILDYKDDDDKV</b>
Tag:	C-Myc/DDK
Predicted MW:	14 kDa
Concentration:	>0.05 µg/µL as determined by microplate BCA method
Purity:	> 80% as determined by SDS-PAGE and Coomassie blue staining
Buffer:	25 mM Tris-HCl, 100 mM glycine, pH 7.3, 10% glycerol
Preparation:	Recombinant protein was captured through anti-DDK affinity column followed by conventional chromatography steps.
Note:	For testing in cell culture applications, please filter before use. Note that you may experience some loss of protein during the filtration process.
Storage:	Store at -80°C.
Stability:	Stable for 12 months from the date of receipt of the product under proper storage and handling conditions. Avoid repeated freeze-thaw cycles.
RefSeq:	<a href="#">NP_002280</a>
Locus ID:	3906
UniProt ID:	<a href="#">P00709</a> , <a href="#">A0A080YV01</a>
RefSeq Size:	742



[View online »](#)

Cytogenetics: 12q13.11

RefSeq ORF: 426

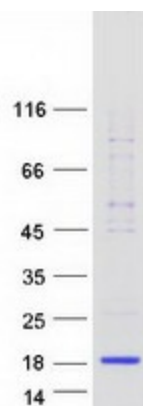
Synonyms: LYZG

**Summary:** This gene encodes alpha-lactalbumin, a principal protein of milk. Alpha-lactalbumin forms the regulatory subunit of the lactose synthase (LS) heterodimer and beta 1,4-galactosyltransferase (beta4Gal-T1) forms the catalytic component. Together, these proteins enable LS to produce lactose by transferring galactose moieties to glucose. As a monomer, alpha-lactalbumin strongly binds calcium and zinc ions and may possess bactericidal or antitumor activity. A folding variant of alpha-lactalbumin, called HAMLET, likely induces apoptosis in tumor and immature cells. [provided by RefSeq, Jul 2008]

**Protein Families:** Secreted Protein

**Protein Pathways:** Galactose metabolism

### Product images:



Coomassie blue staining of purified LALBA protein (Cat# [TP321214]). The protein was produced from HEK293T cells transfected with LALBA cDNA clone (Cat# [RC221214]) using MegaTran 2.0 (Cat# [TT210002]).