

## Product datasheet for TP321190L

### CRLF2 (NM\_022148) Human Recombinant Protein

#### Product data:

Product Type:	Recombinant Proteins
Description:	Recombinant protein of human cytokine receptor-like factor 2 (CRLF2), transcript variant 1, 1 mg
Species:	Human
Expression Host:	HEK293T
Expression cDNA Clone or AA Sequence:	>RC221190 representing NM_022148 Red=Cloning site Green=Tags(s)

MGRLVLLWGAAVFLGGWMALGQGGAEVQIQIIFNLETVQVTWNASKYSRTNLTfHYRFNGDEAYDQC  
TNYLLQEGHTSGCLLDAEQRDDILYFSIRNGTHPVFTASRWMVYLLKPSSPKHVRFSWHQDAVTVTCSDL  
SYGDLLYEYQYRSPFDTEWQSKQENTCNVTIEGLDAEKCYFWRVKAMEDVYGPDTYPSDWSEVTCWQR  
GEIRDACAETPTPPKPKLSKFISSLAILLMVSLLLSLWKLWRVRKFLIPVDPKPSIFPGLFEIHQG  
NFQEWITDTQNV AHLHKMAGAEQESGPEEPLVQLAKTEAESPRMLDPQTEEKEASGSLQLPHQPLQGG  
DVVTIGGFTFVMNDRSYVAL

TRTRPLEQKLISEEDLAANDILDYKDDDDKV

Tag:	C-Myc/DDK
Predicted MW:	41.8 kDa
Concentration:	>0.05 µg/µL as determined by microplate BCA method
Purity:	> 80% as determined by SDS-PAGE and Coomassie blue staining
Buffer:	25 mM Tris-HCl, 100 mM glycine, pH 7.3, 10% glycerol
Preparation:	Recombinant protein was captured through anti-DDK affinity column followed by conventional chromatography steps.
Note:	For testing in cell culture applications, please filter before use. Note that you may experience some loss of protein during the filtration process.
Storage:	Store at -80°C.
Stability:	Stable for 12 months from the date of receipt of the product under proper storage and handling conditions. Avoid repeated freeze-thaw cycles.
RefSeq:	<a href="#">NP_071431</a>



[View online »](#)

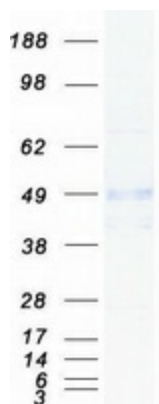
Locus ID: 64109  
UniProt ID: [Q9HC73](#), [D0E2W4](#)  
RefSeq Size: 1579  
Cytogenetics: X;Y  
RefSeq ORF: 1110  
Synonyms: CRL2; CRLF2Y; TSLPR

**Summary:** This gene encodes a member of the type I cytokine receptor family. The encoded protein is a receptor for thymic stromal lymphopoietin (TSLP). Together with the interleukin 7 receptor (IL7R), the encoded protein and TSLP activate STAT3, STAT5, and JAK2 pathways, which control processes such as cell proliferation and development of the hematopoietic system. Rearrangement of this gene with immunoglobulin heavy chain gene (IGH) on chromosome 14, or with P2Y purinoceptor 8 gene (P2RY8) on the same X or Y chromosomes is associated with B-progenitor acute lymphoblastic leukemia (ALL) and Down syndrome ALL. Alternatively spliced transcript variants have been found for this gene. [provided by RefSeq, Sep 2014]

**Protein Families:** Druggable Genome, Secreted Protein, Transmembrane

**Protein Pathways:** Cytokine-cytokine receptor interaction, Jak-STAT signaling pathway

### Product images:



Coomassie blue staining of purified CRLF2 protein (Cat# [TP321190]). The protein was produced from HEK293T cells transfected with CRLF2 cDNA clone (Cat# [RC221190]) using MegaTran 2.0 (Cat# [TT210002]).