

## Product datasheet for TP321180M

### ARHGEF1 (NM\_199002) Human Recombinant Protein

#### Product data:

Product Type:	Recombinant Proteins
Description:	Recombinant protein of human Rho guanine nucleotide exchange factor (GEF) 1 (ARHGEF1), transcript variant 1, 100 µg
Species:	Human
Expression Host:	HEK293T
Expression cDNA Clone or AA Sequence:	>RC221180 protein sequence <b>Red</b> =Cloning site <b>Green</b> =Tags(s)

MASLSTWSSPAEPREMEDFARGAASPGPSRPGLVPSIIGAEDDFENELETNSEEQNSQFQSLEQVKRR  
PAHLMALLQHVALQFEPGPLLCLHADMLGSLGPKAKKAFDFYHSFLEKTAVLRVPVPPNVAFELDRT  
RADLISEDVQRRFVQEVVQSQQVAVGRQLEDFRSKRLMGMTWPWEQELAQLEAWVGRDRASYEARERHVAE  
RLLMHLEEMQHTISTDEEKSAAVVNAIGLYMRHLGVRTKSGDKKSGRNFFRKKVMGNRRSDEPAKTKKGL  
SSILDAARWNRGEPQVPDFRHLKAEVDAEKPGATDRKGGVGMPSRDRNIGAPGQDTPGVSLHPLSLDSPD  
REPGADAPLELGDSSPQGPMSLES LAPPESTDEGAETESPEPGDEGEPGRSGLELEPEEPPGWRELVPPD  
TLHSLPKSQVKRQEVISELLVTEAAHVRLRVLHDLFFQPMACECLFFPLEELQNIFFSLDELIEVHSLFL  
DRLMKRRQESGYLIEEIGDVLLARFDGAEGSWFQKISSRQSFQSFALQKAKQRKDPFCAFVQEAES  
RPRCRRQLKDMIPTMQRLTKYPLLLQSIGQNTTEPTEREKVELAAECCREILHHVNQAVRDMEDLLRL  
KDYQRRLDLSHLRQSSDPMLSEFKNLDITKKKLVHEGPLTWRVTKDKAVEVHVLDDLLLLLRQDERL  
LLKSHSRTLTPDPGKTMLRPVLRRLTSAMTREVATDHKAFYVLTWDQEAQIYELVAQTVSERKNWCALI  
TETAGSLKVPAPASRPKPRPSPSSTREPLLSSSENGNGGRETSPADARTERILSDLLPFCRPGPEGQLAA  
TALRKVLSLKQLLFPAAEDNGAGPPRDGDGVPGGGPLSPARTQEIQENLLSLEETMKQLEEEEEFCRLR  
PLLSQLGGNSVPQPGCT

**TRTRPLEQKLISEEDLAANDILDYKDDDDKV**

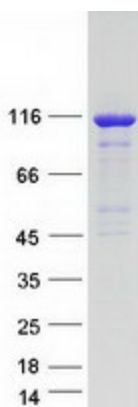
Tag:	C-Myc/DDK
Predicted MW:	103.9 kDa
Concentration:	>0.05 µg/µL as determined by microplate BCA method
Purity:	> 80% as determined by SDS-PAGE and Coomassie blue staining
Buffer:	25 mM Tris-HCl, 100 mM glycine, pH 7.3, 10% glycerol



[View online »](#)

<b>Preparation:</b>	Recombinant protein was captured through anti-DDK affinity column followed by conventional chromatography steps.
<b>Note:</b>	For testing in cell culture applications, please filter before use. Note that you may experience some loss of protein during the filtration process.
<b>Storage:</b>	Store at -80°C.
<b>Stability:</b>	Stable for 12 months from the date of receipt of the product under proper storage and handling conditions. Avoid repeated freeze-thaw cycles.
<b>RefSeq:</b>	<a href="#">NP_945353</a>
<b>Locus ID:</b>	9138
<b>UniProt ID:</b>	<a href="#">Q92888</a>
<b>RefSeq Size:</b>	3261
<b>Cytogenetics:</b>	19q13.2
<b>RefSeq ORF:</b>	2781
<b>Synonyms:</b>	GEF1; IMD62; LBCL2; LSC; P115-RHOGEF; SUB1.5
<b>Summary:</b>	Rho GTPases play a fundamental role in numerous cellular processes that are initiated by extracellular stimuli that work through G protein coupled receptors. The encoded protein may form complex with G proteins and stimulate Rho-dependent signals. Multiple alternatively spliced transcript variants have been found for this gene, but the full-length nature of some variants has not been defined. [provided by RefSeq, Jul 2008]
<b>Protein Pathways:</b>	Regulation of actin cytoskeleton, Vascular smooth muscle contraction

### Product images:



Coomassie blue staining of purified ARHGEF1 protein (Cat# [TP321180]). The protein was produced from HEK293T cells transfected with ARHGEF1 cDNA clone (Cat# [RC221180]) using MegaTran 2.0 (Cat# [TT210002]).