

## Product datasheet for TP321178M

### HKDC1 (NM\_025130) Human Recombinant Protein

#### Product data:

Product Type:	Recombinant Proteins
Description:	Recombinant protein of human hexokinase domain containing 1 (HKDC1), 100 µg
Species:	Human
Expression Host:	HEK293T
Expression cDNA Clone or AA Sequence:	>RC221178 protein sequence Red=Cloning site Green=Tags(s)

MFAVHLMAFYFSKLEKEDQIKKVDRLFYHMRLSDDTLDDIMRRFRAEMEKGLAKDTNPTAAVKMLPTFVRA  
IPDGSENGEFLSLDLGGSKFRVLKVQVAEEGKRHVQMESQFYPTPNEIIRNGTELFEYVADCLADFMKT  
KDLKHKKLPLGLTFSFPCRQTKLEEGVLLSWTKKFKARGVQDQDVSRLTKAMRRHKDMDVDILVNDT  
VGTMMTCAYDDPYCEVGVIIGTGTNACYMEDMSNIDLVEGDEGRMCINTEWGAFGDDGALEDIRTEFDRE  
LDLGS LNPGKQLFEKMISGLYL GELVRLILLKMAKAGLLFGGEKSSALHTKGKIETR HVAAMEKYKEGLA  
NTREILVDLGLPESEADCI AVQH VCTIVSFRSANLCAAALAILTRLRENKKVERLRRTTVGMDGTLYKIH  
PQYPKRLHKVVRKLV PSCDVRFLLESSEGSTKGAAMVTAVASRVQAQRKQIDRVLALFQLTREQLVDVQAK  
MRAELEYGLKKKSHGLATVRMLPTYVCGLPDGTGTEKGFALDLGGTNFRVLLVKIRSGRRSVMYKNIFA  
IPLEIMQGTGEELFDHIVQCIADFLDYMGLKGASLPLGFTFSFPCRQMSIDKGT LIGWTKGFKATDCEGE  
DVVDMLREAIKRRNEFDLDIVAVVNDTVGTMTCGYEDPNCEIGLIAGTGSNMCYMEDMRNIEMVEGEG  
KMCINTEWGGFGDNGCIDDITRYDTEVDEGSLNPGKQRYEKMTSGMYLGEIVRQILIDLTKQGLLFRGQ  
ISERLRTRGIFETKFLSQIESDRLALLQVRRILQQLGLDSTCEDSI VVKEVCGAVSRRAAQLCGAGLAAI  
VEKRREDQGLEHLRITVGV DGTLYKLHPHFSRILQETVKELAPRCDVTFM LSEDGSGKGAALITAVAKRL  
QQAQKEN

TRTRPLEQKLISEEDLAANDILDYKDDDDKV

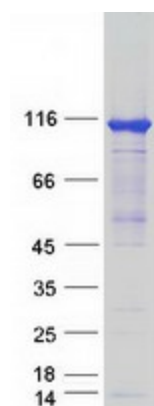
Tag:	C-Myc/DDK
Predicted MW:	102.3 kDa
Concentration:	>0.05 µg/µL as determined by microplate BCA method
Purity:	> 80% as determined by SDS-PAGE and Coomassie blue staining
Buffer:	25 mM Tris-HCl, 100 mM glycine, pH 7.3, 10% glycerol
Preparation:	Recombinant protein was captured through anti-DDK affinity column followed by conventional chromatography steps.



[View online »](#)

<b>Note:</b>	For testing in cell culture applications, please filter before use. Note that you may experience some loss of protein during the filtration process.
<b>Storage:</b>	Store at -80°C.
<b>Stability:</b>	Stable for 12 months from the date of receipt of the product under proper storage and handling conditions. Avoid repeated freeze-thaw cycles.
<b>RefSeq:</b>	<a href="#">NP_079406</a>
<b>Locus ID:</b>	80201
<b>UniProt ID:</b>	<a href="#">Q2TB90</a> , <a href="#">B3KT70</a>
<b>RefSeq Size:</b>	3719
<b>Cytogenetics:</b>	10q22.1
<b>RefSeq ORF:</b>	2751
<b>Summary:</b>	This gene encodes a member of the hexokinase protein family. The encoded protein is involved in glucose metabolism, and reduced expression may be associated with gestational diabetes mellitus. High expression of this gene may also be associated with poor prognosis in hepatocarcinoma. [provided by RefSeq, Sep 2016]
<b>Protein Families:</b>	Druggable Genome

### Product images:



Coomassie blue staining of purified HKDC1 protein (Cat# [TP321178]). The protein was produced from HEK293T cells transfected with HKDC1 cDNA clone (Cat# [RC221178]) using MegaTran 2.0 (Cat# [TT210002]).