

## Product datasheet for **TP321178**

### HKDC1 (NM\_025130) Human Recombinant Protein

#### Product data:

**Product Type:** Recombinant Proteins

**Description:** Recombinant protein of human hexokinase domain containing 1 (HKDC1), 20 µg

**Species:** Human

**Expression Host:** HEK293T

**Expression cDNA Clone  
or AA Sequence:** >RC221178 protein sequence  
**Red**=Cloning site **Green**=Tags(s)

MFAVHLMIFYFSKLEKEDQIKKVDRLFYHMRLSDDTLLDIMRRFRAEMEKGLAKDTNPTAAVKMLPTFVRA  
IPDGSENGEFLSLDLGGSKFRVLKVQVAEEGKRHVQMESQFYPTPNEIIRNGTELFEYVADCLADFMKT  
KDLKHKKLPLGLTFSFPCRQTKLEEGVLLSWTKKFKARGVQDQDVSRLTKAMRRHKDMDVDILVNDT  
VGTMMTCAYDDPYCEVGVIIGTGTNACYMEDMSNIDLVEGDEGRMCINTEWGAFGDDGALEDIRTEFDRE  
LDLGS LNPGKQLFEKMISGLYL GELVRLILLKMAKAGLLFGGEKSSALHTKGIETR HVAAMEKYKEGLA  
NTREILVDLGLPSEADCI AVQH VCTIVSFRSANLCAAALAILTRLRENK KVERLR TTVGMDGTLYKIH  
PQYPKRLHKVVRKLV PSCDVRFLLES GSTKGAAMVTAVASRVQAQRKQIDRVLALFQLTREQLVDVQAK  
MRAELEYGLKKKSHGLATVRMLPTYVCGLPDGTGTEKGFALDLGGTNFRVLLVKIRSGRRSVMYKNIFA  
IPLEIMQGTGEELFDHIVQCIADFLDYMGLKGASLPLGFTFSFPCRQMSIDKGT LIGWTKGFKATDCEGE  
DVVDMLREAIKRRNEFDLDIVAVVNDTVGTMTCGYEDPNCEIGLIAGTGSNMCYMEDMRNIEMVEGEG  
KMCINTEWGGFGDNGCIDDITRYDTEVDEGSLNPGKQRYEKM TSGMYLGEIVRQILIDLTKQGLLFRGQ  
ISERLRTRGIFETKFLSQIESDRLALLQVRRILQQLGLDSTCEDSI VVKEVCGAVSRRAAQLCGAGLAAI  
VEKRREDQGLEHLRITVGV DGTLYKLHPHFSRILQETVKELAPRCDVTFM LSEDGSGKGAALITAVAKRL  
QQAQKEN

**TRTRPLEQKLISEEDLAANDILDYKDDDDKV**

**Tag:** C-Myc/DDK

**Predicted MW:** 102.3 kDa

**Concentration:** >0.05 µg/µL as determined by microplate BCA method

**Purity:** > 80% as determined by SDS-PAGE and Coomassie blue staining

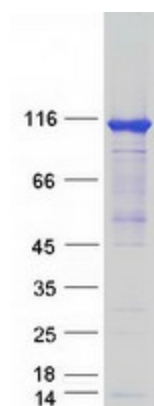
**Buffer:** 25 mM Tris-HCl, 100 mM glycine, pH 7.3, 10% glycerol

**Preparation:** Recombinant protein was captured through anti-DDK affinity column followed by conventional chromatography steps.



[View online »](#)

<b>Note:</b>	For testing in cell culture applications, please filter before use. Note that you may experience some loss of protein during the filtration process.
<b>Storage:</b>	Store at -80°C.
<b>Stability:</b>	Stable for 12 months from the date of receipt of the product under proper storage and handling conditions. Avoid repeated freeze-thaw cycles.
<b>RefSeq:</b>	<a href="#">NP_079406</a>
<b>Locus ID:</b>	80201
<b>UniProt ID:</b>	<a href="#">Q2TB90</a> , <a href="#">B3KT70</a>
<b>RefSeq Size:</b>	3719
<b>Cytogenetics:</b>	10q22.1
<b>RefSeq ORF:</b>	2751
<b>Summary:</b>	This gene encodes a member of the hexokinase protein family. The encoded protein is involved in glucose metabolism, and reduced expression may be associated with gestational diabetes mellitus. High expression of this gene may also be associated with poor prognosis in hepatocarcinoma. [provided by RefSeq, Sep 2016]
<b>Protein Families:</b>	Druggable Genome

**Product images:**

Coomassie blue staining of purified HKDC1 protein (Cat# TP321178). The protein was produced from HEK293T cells transfected with HKDC1 cDNA clone (Cat# [RC221178]) using MegaTran 2.0 (Cat# [TT210002]).