

## Product datasheet for **TP321157L**

### **RUNDC3B (NM\_138290) Human Recombinant Protein**

#### **Product data:**

<b>Product Type:</b>	Recombinant Proteins
<b>Description:</b>	Recombinant protein of human RUN domain containing 3B (RUNDC3B), transcript variant 1, 1 mg
<b>Species:</b>	Human
<b>Expression Host:</b>	HEK293T
<b>Expression cDNA Clone or AA Sequence:</b>	>RC221157 representing NM_138290 <b>Red</b> =Cloning site <b>Green</b> =Tags(s)
	 MASRSLGGLSGIRGGGGGGGKKSLSARNAAVERRNLITVCRFSVKTLIDRSCFETIDDSSPEFNNFAAIL EQILSHRLKEISQSCRWLAHLQIPLQGQVTWFGYESPRSFWDYIRVACRKVSQNCICSIENMENVSSRA KGRWIRVALMEKHLSEYISTALRDFKTRRFYEDGAIVLGEEANMLAGMLLGLNAIDFSFCLKGEGLDG SFPVIDYTPYLKIQSSDISSEELRTLGSSESTPENVGPPFLMDENSWFNKCKRVKQKYQLTL EQKGYLEELLRLRENQLSESVSNKILLQRIEDSDLAHKLEKEQLEYIIVELQDQLTVLKNNDLRSRQEL TAHLTNQWSPGALDVNAVALDTLLYRKHNKQWYEKSYQSLDQLSAEVLSQTSLDPGQSQEGDGKQDTL NVMSEGKEDTPSLLGLCGSLTTSVASYKSLTSLKSN DYLASPTTEMTSPGLTPS  <b>TRTRPLEQKLISEEDLAANDILDYKDDDDKV</b>
<b>Tag:</b>	C-Myc/DDK
<b>Predicted MW:</b>	52.6 kDa
<b>Concentration:</b>	>0.05 µg/µL as determined by microplate BCA method
<b>Purity:</b>	> 80% as determined by SDS-PAGE and Coomassie blue staining
<b>Buffer:</b>	25 mM Tris-HCl, 100 mM glycine, pH 7.3, 10% glycerol
<b>Preparation:</b>	Recombinant protein was captured through anti-DDK affinity column followed by conventional chromatography steps.
<b>Note:</b>	For testing in cell culture applications, please filter before use. Note that you may experience some loss of protein during the filtration process.
<b>Storage:</b>	Store at -80°C.
<b>Stability:</b>	Stable for 12 months from the date of receipt of the product under proper storage and handling conditions. Avoid repeated freeze-thaw cycles.



[View online »](#)

RefSeq: [NP\\_612147](#)

Locus ID: 154661

UniProt ID: [Q96NLO](#)

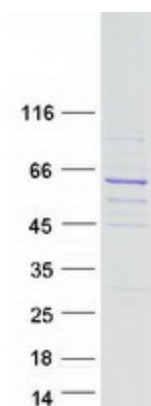
RefSeq Size: 2241

Cytogenetics: 7q21.12

RefSeq ORF: 1419

Synonyms: RPIB9; RPIP9

### Product images:



Coomassie blue staining of purified RUNDC3B protein (Cat# [TP321157]). The protein was produced from HEK293T cells transfected with RUNDC3B cDNA clone (Cat# [RC221157]) using MegaTran 2.0 (Cat# [TT210002]).