

Product datasheet for **TP321130L**

UBE2W (NM_001001481) Human Recombinant Protein

Product data:

Product Type:	Recombinant Proteins
Description:	Recombinant protein of human ubiquitin-conjugating enzyme E2W (putative) (UBE2W), transcript variant 1, 1 mg
Species:	Human
Expression Host:	HEK293T
Expression cDNA Clone or AA Sequence:	Recombinant protein was produced with TrueORF clone, RC221130.
Tag:	C-Myc/DDK
Predicted MW:	18.5 kDa
Concentration:	>0.05 µg/µL as determined by microplate BCA method
Purity:	> 80% as determined by SDS-PAGE and Coomassie blue staining
Buffer:	25 mM Tris-HCl, 100 mM glycine, pH 7.3, 10% glycerol
Preparation:	Recombinant protein was captured through anti-DDK affinity column followed by conventional chromatography steps.
Note:	For testing in cell culture applications, please filter before use. Note that you may experience some loss of protein during the filtration process.
Storage:	Store at -80°C.
Stability:	Stable for 12 months from the date of receipt of the product under proper storage and handling conditions. Avoid repeated freeze-thaw cycles.
RefSeq:	NP_001001481
Locus ID:	55284
UniProt ID:	Q96B02 , X6REH9
RefSeq Size:	4057
Cytogenetics:	8q21.11
RefSeq ORF:	486
Synonyms:	UBC-16; UBC16



[View online »](#)

Summary:

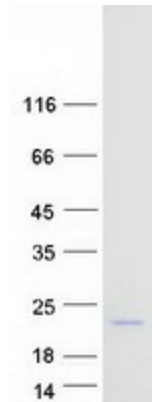
This gene encodes a nuclear-localized ubiquitin-conjugating enzyme (E2) that, along with ubiquitin-activating (E1) and ligating (E3) enzymes, coordinates the addition of a ubiquitin moiety to existing proteins. The encoded protein promotes the ubiquitination of Fanconi anemia complementation group proteins and may be important in the repair of DNA damage. There is a pseudogene for this gene on chromosome 1. Alternative splicing results in multiple transcript variants. [provided by RefSeq, Aug 2012]

Protein Families:

Transcription Factors

Protein Pathways:

Ubiquitin mediated proteolysis

Product images:

Coomassie blue staining of purified UBE2W protein (Cat# [TP321130]). The protein was produced from HEK293T cells transfected with UBE2W cDNA clone (Cat# [RC221130]) using MegaTran 2.0 (Cat# [TT210002]).