

Product datasheet for **TP321105M**

ZDHHC15 (NM_144969) Human Recombinant Protein

Product data:

Product Type:	Recombinant Proteins
Description:	Recombinant protein of human zinc finger, DHC-type containing 15 (ZDHHC15), 100 µg
Species:	Human
Expression Host:	HEK293T
Expression cDNA Clone or AA Sequence:	>RC221105 representing NM_144969 Red =Cloning site Green =Tags(s)

MRRGWKMALSGGLRCCRRVLSWVPVLVIVLVVLSYAYVFELCLVTVLSPA EKVIYLILYHAIFVFFTW
TYWKSIFTLPQQPNQKFHLSYTDKERYENEERPEVQKQMLVDMAKKLPVYTRTGSGAVRFCDRCHLIKPD
RCHHCSVCAMCVLKMDHHC PWVNNCIGFSNYKFFLQFLAYSVLYCLYIATTVFSYFIKYWRGELPSVRSK
FHVLFLLFVACMFFVSLVILFGYHCWLVSRNKTTLEAFCTPVFTSGPEKNGFNLFGIKNIQVFGDKKKF
WLIPIGSSPGDGHSFPMRSMNESQNPLLANEETWEDNEDDNQDYPEGSSSLAVETET

TRTRPLEQKLISEEDLAANDILDYKDDDDKV

Tag:	C-Myc/DDK
Predicted MW:	39.2 kDa
Concentration:	>0.05 µg/µL as determined by microplate BCA method
Purity:	> 80% as determined by SDS-PAGE and Coomassie blue staining
Buffer:	25 mM Tris-HCl, 100 mM glycine, pH 7.3, 10% glycerol
Preparation:	Recombinant protein was captured through anti-DDK affinity column followed by conventional chromatography steps.
Note:	For testing in cell culture applications, please filter before use. Note that you may experience some loss of protein during the filtration process.
Storage:	Store at -80°C.
Stability:	Stable for 12 months from the date of receipt of the product under proper storage and handling conditions. Avoid repeated freeze-thaw cycles.
RefSeq:	NP_659406
Locus ID:	158866



[View online »](#)

UniProt ID: [Q96MV8](#), [B3KY34](#)

RefSeq Size: 1782

Cytogenetics: Xq13.3

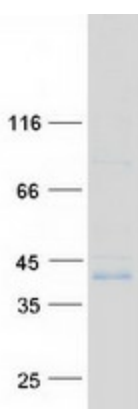
RefSeq ORF: 1011

Synonyms: DHHC15; MRX91

Summary: The protein encoded by this gene belongs to the DHHC palmitoyltransferase family. Mutations in this gene are associated with mental retardatio X-linked type 91 (MRX91). Alternatively spliced transcript variants encoding different isoforms have been found for this gene. [provided by RefSeq, Sep 2009]

Protein Families: Transmembrane

Product images:



Coomassie blue staining of purified ZDHHC15 protein (Cat# [TP321105]). The protein was produced from HEK293T cells transfected with ZDHHC15 cDNA clone (Cat# [RC221105]) using MegaTran 2.0 (Cat# [TT210002]).