

Product datasheet for **TP321105L**

ZDHC15 (NM_144969) Human Recombinant Protein

Product data:

Product Type: Recombinant Proteins
Description: Recombinant protein of human zinc finger, DHC-type containing 15 (ZDHC15), 1 mg
Species: Human
Expression Host: HEK293T
Expression cDNA Clone or AA Sequence: >RC221105 representing NM_144969
Red=Cloning site **Green**=Tags(s)

MRRGWKMALSGGLRCCRRVLSWVPVLVIVLVVLSYAYVFELCLVTVLSPAQKVIYLILYHAIFVFFTW
TYWKSIFTLPQQPNQKFHLSYTDKERYENERPEVQKQMLVDMAKKLPVYTRTGSGAVRFCDRCHLIKPD
RCHHCSVCAMCVLKMDHHCPCWVNNCIGFSNYKFFLQFLAYSVLYCLYIATTVFSYFIKYWRGELPSVRSK
FHVLFLLFVACMFFVSLVILFGYHCWLVSRNKTTLEAFCTPVFTSGPEKNGFNLFKNIQVFGDKKKF
WLIPIGSSPGDGHSPMRSMNESQNPLLANEETWEDNEDDNQDYPEGSSSLAVETET

TRTRPLEQKLISEEDLAANDILDYKDDDDKV

Tag: C-Myc/DDK
Predicted MW: 39.2 kDa
Concentration: >0.05 µg/µL as determined by microplate BCA method
Purity: > 80% as determined by SDS-PAGE and Coomassie blue staining
Buffer: 25 mM Tris-HCl, 100 mM glycine, pH 7.3, 10% glycerol
Preparation: Recombinant protein was captured through anti-DDK affinity column followed by conventional chromatography steps.
Note: For testing in cell culture applications, please filter before use. Note that you may experience some loss of protein during the filtration process.
Storage: Store at -80°C.
Stability: Stable for 12 months from the date of receipt of the product under proper storage and handling conditions. Avoid repeated freeze-thaw cycles.
RefSeq: [NP_659406](#)
Locus ID: 158866



[View online »](#)

UniProt ID: [Q96MV8](#), [B3KY34](#)

RefSeq Size: 1782

Cytogenetics: Xq13.3

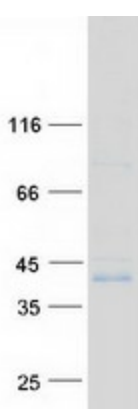
RefSeq ORF: 1011

Synonyms: DHHC15; MRX91

Summary: The protein encoded by this gene belongs to the DHHC palmitoyltransferase family. Mutations in this gene are associated with mental retardatio X-linked type 91 (MRX91). Alternatively spliced transcript variants encoding different isoforms have been found for this gene. [provided by RefSeq, Sep 2009]

Protein Families: Transmembrane

Product images:



Coomassie blue staining of purified ZDHHC15 protein (Cat# [TP321105]). The protein was produced from HEK293T cells transfected with ZDHHC15 cDNA clone (Cat# [RC221105]) using MegaTran 2.0 (Cat# [TT210002]).