

## Product datasheet for **TP321105**

### ZDHHC15 (NM\_144969) Human Recombinant Protein

#### Product data:

**Product Type:** Recombinant Proteins  
**Description:** Recombinant protein of human zinc finger, DHC-type containing 15 (ZDHHC15), 20 µg  
**Species:** Human  
**Expression Host:** HEK293T  
**Expression cDNA Clone or AA Sequence:** >RC221105 representing NM\_144969  
**Red**=Cloning site **Green**=Tags(s)

MRRGWKMALSGGLRCCRRVLSWVPVLVIVLVWLWSYAYVFELCLVTVLSPA EKVIYLILYHAIFVFFTW  
TYWKSIFTLPQQPNQKFHLSYTDKERYENEERPEVQKQMLVDMAKKLPVYTRTGSGAVRFCDRCHLIKPD  
RCHHC SVCAMCVLKMDHHC PWVNNCIGFSNYKFFLQFLAYS VLYCLYIATTVFSYFIKYWRGELPSVRSK  
FHVLFLLFVACMFFVSLVILFGYHCWLVSRNKTTLEAFCTPVFTSGPEKNGFNLFGIKNIQVFGDKKKF  
WLIPIGSSPGDGHSPMRS MNESQNPLLANEETWEDNEDDNQDYPEGSSSLAVETET

**TR**TRPLEQKLISEEDLAANDILDYKDDDDKV

**Tag:** C-Myc/DDK  
**Predicted MW:** 39.2 kDa  
**Concentration:** >0.05 µg/µL as determined by microplate BCA method  
**Purity:** > 80% as determined by SDS-PAGE and Coomassie blue staining  
**Buffer:** 25 mM Tris-HCl, 100 mM glycine, pH 7.3, 10% glycerol  
**Preparation:** Recombinant protein was captured through anti-DDK affinity column followed by conventional chromatography steps.  
**Note:** For testing in cell culture applications, please filter before use. Note that you may experience some loss of protein during the filtration process.  
**Storage:** Store at -80°C.  
**Stability:** Stable for 12 months from the date of receipt of the product under proper storage and handling conditions. Avoid repeated freeze-thaw cycles.  
**RefSeq:** [NP\\_659406](#)  
**Locus ID:** 158866



[View online »](#)

UniProt ID: [Q96MV8](#), [B3KY34](#)

RefSeq Size: 1782

Cytogenetics: Xq13.3

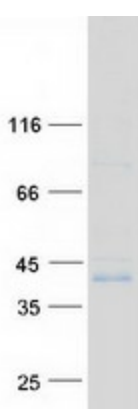
RefSeq ORF: 1011

Synonyms: DHHC15; MRX91

**Summary:** The protein encoded by this gene belongs to the DHHC palmitoyltransferase family. Mutations in this gene are associated with mental retardatio X-linked type 91 (MRX91). Alternatively spliced transcript variants encoding different isoforms have been found for this gene. [provided by RefSeq, Sep 2009]

**Protein Families:** Transmembrane

### Product images:



Coomassie blue staining of purified ZDHHC15 protein (Cat# TP321105). The protein was produced from HEK293T cells transfected with ZDHHC15 cDNA clone (Cat# [RC221105]) using MegaTran 2.0 (Cat# [TT210002]).