

Product datasheet for **TP321065M**

Calneuron 1 (CALN1) (NM_001017440) Human Recombinant Protein

Product data:

Product Type:	Recombinant Proteins
Description:	Purified recombinant protein of Homo sapiens calneuron 1 (CALN1), transcript variant 2, 100 µg
Species:	Human
Expression Host:	HEK293T
Expression cDNA Clone or AA Sequence:	>RC221065 representing NM_001017440 Red =Cloning site Green =Tags(s)
	 MPFHVVTAGLLYKGNLNRSL SAGSDSEQLANISVEELDEIREAFRVLDRDNGNFISKQELGMAMRSLGY MPSEVELAIIMQRLDMDGDGQVDFDEFMTILGPKLVSEGRDGLGNTIDSIFWQFDMQRITLLEELKHIL YHAFRDHLTMKDIENIIINEESLNETSGNCQTEFEGVHSQKQNRQTCVRKSLICAFAMAFIISVMLIAA NQILRSGME TRTRPLEQKLISEEDLAANDILDYKDDDDKV
Tag:	C-Myc/DDK
Predicted MW:	24.7 kDa
Concentration:	>0.05 µg/µL as determined by microplate BCA method
Purity:	> 80% as determined by SDS-PAGE and Coomassie blue staining
Buffer:	25 mM Tris-HCl, 100 mM glycine, pH 7.3, 10% glycerol
Preparation:	Recombinant protein was captured through anti-DDK affinity column followed by conventional chromatography steps.
Note:	For testing in cell culture applications, please filter before use. Note that you may experience some loss of protein during the filtration process.
Storage:	Store at -80°C.
Stability:	Stable for 12 months from the date of receipt of the product under proper storage and handling conditions. Avoid repeated freeze-thaw cycles.
RefSeq:	NP_001017440
Locus ID:	83698



[View online »](#)

UniProt ID: [Q9BXU9](#), [A4D1Z1](#)

RefSeq Size: 5802

Cytogenetics: 7q11.22

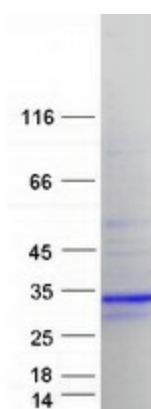
RefSeq ORF: 657

Synonyms: CABP8

Summary: This gene encodes a protein with high similarity to the calcium-binding proteins of the calmodulin family. The encoded protein contains two EF-hand domains and potential calcium-binding sites. Alternative splicing results in multiple transcript variants. [provided by RefSeq, Jul 2008]

Protein Families: Transmembrane

Product images:



Coomassie blue staining of purified CALN1 protein (Cat# [TP321065]). The protein was produced from HEK293T cells transfected with CALN1 cDNA clone (Cat# [RC221065]) using MegaTran 2.0 (Cat# [TT210002]).