

Product datasheet for TP321065

Calneuron 1 (CALN1) (NM_001017440) Human Recombinant Protein

Product data:

Product Type: Recombinant Proteins
Description: Purified recombinant protein of Homo sapiens calneuron 1 (CALN1), transcript variant 2, 20 µg
Species: Human
Expression Host: HEK293T
Expression cDNA Clone or AA Sequence: >RC221065 representing NM_001017440
Red=Cloning site **Green**=Tags(s)

MPFHVVTAGLLYKGNLNRSLASGSDSEQLANISVEELDEIREAFRVLDRDNGNFISKQELGMAMRSLGY
MPSEVELAIIMQRLDMDGDGQVDFDEFMTILGPKLVSSSEGRDGFGLGNTIDSIFWQFDMQRITLLEELKHIL
YHAFRDHLTMKDIENIIINEEESLNETSGNCQTEFEGVHSQKQNRQTCVRKSLICAFAMAFIISVMLIAA
NQILRSGME

TRTRPLEQKLISEEDLAANDILDYKDDDDKV

Tag: C-Myc/DDK
Predicted MW: 24.7 kDa
Concentration: >0.05 µg/µL as determined by microplate BCA method
Purity: > 80% as determined by SDS-PAGE and Coomassie blue staining
Buffer: 25 mM Tris-HCl, 100 mM glycine, pH 7.3, 10% glycerol
Preparation: Recombinant protein was captured through anti-DDK affinity column followed by conventional chromatography steps.
Note: For testing in cell culture applications, please filter before use. Note that you may experience some loss of protein during the filtration process.
Storage: Store at -80°C.
Stability: Stable for 12 months from the date of receipt of the product under proper storage and handling conditions. Avoid repeated freeze-thaw cycles.
RefSeq: [NP_001017440](#)
Locus ID: 83698
UniProt ID: [Q9BXU9](#), [A4D1Z1](#)



[View online »](#)

RefSeq Size: 5802

Cytogenetics: 7q11.22

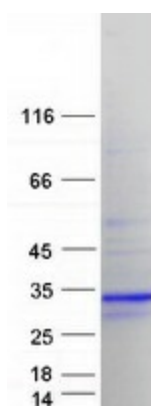
RefSeq ORF: 657

Synonyms: CABP8

Summary: This gene encodes a protein with high similarity to the calcium-binding proteins of the calmodulin family. The encoded protein contains two EF-hand domains and potential calcium-binding sites. Alternative splicing results in multiple transcript variants. [provided by RefSeq, Jul 2008]

Protein Families: Transmembrane

Product images:



Coomassie blue staining of purified CALN1 protein (Cat# TP321065). The protein was produced from HEK293T cells transfected with CALN1 cDNA clone (Cat# [RC221065]) using MegaTran 2.0 (Cat# [TT210002]).