

Product datasheet for **TP321043M**

CPNE1 (NM_152929) Human Recombinant Protein

Product data:

Product Type: Recombinant Proteins

Description: Recombinant protein of human copine I (CPNE1), transcript variant 6, 100 µg

Species: Human

Expression Host: HEK293T

**Expression cDNA Clone
or AA Sequence:** >RC221043 protein sequence
Red=Cloning site **Green**=Tags(s)

MAHCVTLVQLSISCDHLIDKDIGSKSDPLCVLLQDVGGGSWAELGRTERVRNCSSPEFSKTLQLEYRFET
VQKLRFGIYDIDNKTPELRDDDGLGGAECSLGQIVSSQVLTLPMLKPGKPAAGRTITVSAQELKDNRW
TMEVEARNLDKKDFLGKSDPFLEFFRQGDGKWHLVYRSEVIKNNLNPTWKRFVSVQHFCCGPNSTPIQV
QCSDYDSDGSHDLIGTFHTSLAQLQAVPAEFECIHPEKQKQKKSYSKNSGTIRVKICRVETEYSFLDYVMG
GCQINFTVGVDFTGSNGDPSSPSLHLYSPTGVNEYLMALWSVGSVWQDYDSDKLFPAFGFGAQVPPDWQ
VSHEFALNFNPSNPYCAGIQGIVDAYRQALPQVRLYGPTNFAPIINHVARFAAQAHQGTASQYFMLLLL
TDGAVTDVEATREAVRASNLPM SVIIVGVGGADFEAMEQLDADGGPLHTRSGQAAARDIVQFVPPYRRFQ
NAPREALAQTVLAEVPTQLVSYFRAQGWAPLKPLPPSAKDPAQAPQA

TRTRPLEQKLISEEDLAANDILDYKDDDDKV

Tag: C-Myc/DDK

Predicted MW: 58.9 kDa

Concentration: >0.05 µg/µL as determined by microplate BCA method

Purity: > 80% as determined by SDS-PAGE and Coomassie blue staining

Buffer: 25 mM Tris-HCl, 100 mM glycine, pH 7.3, 10% glycerol

Preparation: Recombinant protein was captured through anti-DDK affinity column followed by conventional chromatography steps.

Note: For testing in cell culture applications, please filter before use. Note that you may experience some loss of protein during the filtration process.

Storage: Store at -80°C.

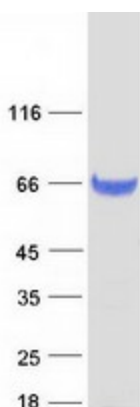
Stability: Stable for 12 months from the date of receipt of the product under proper storage and handling conditions. Avoid repeated freeze-thaw cycles.



[View online >](#)

RefSeq:	NP_690906
Locus ID:	8904
UniProt ID:	Q99829
RefSeq Size:	2199
Cytogenetics:	20q11.22
RefSeq ORF:	1611
Synonyms:	copine-1; copine I; COPN1; CPN1; MGC1142; OTTHUMP00000030775; OTTHUMP00000030776
Summary:	Calcium-dependent membrane-binding proteins may regulate molecular events at the interface of the cell membrane and cytoplasm. This gene encodes a calcium-dependent protein that also contains two N-terminal type II C2 domains and an integrin A domain-like sequence in the C-terminus. However, the encoded protein does not contain a predicted signal sequence or transmembrane domains. This protein has a broad tissue distribution and it may function in membrane trafficking. This gene and the gene for RNA binding motif protein 12 overlap at map location 20q11.21. Alternate splicing results in multiple transcript variants encoding different proteins. [provided by RefSeq, Aug 2008]

Product images:



Coomassie blue staining of purified CPNE1 protein (Cat# [TP321043]). The protein was produced from HEK293T cells transfected with CPNE1 cDNA clone (Cat# [RC221043]) using MegaTran 2.0 (Cat# [TT210002]).