

## Product datasheet for **TP321043**

### CPNE1 (NM\_152929) Human Recombinant Protein

#### Product data:

**Product Type:** Recombinant Proteins

**Description:** Recombinant protein of human copine I (CPNE1), transcript variant 6, 20 µg

**Species:** Human

**Expression Host:** HEK293T

**Expression cDNA Clone  
or AA Sequence:** >RC221043 protein sequence  
**Red**=Cloning site **Green**=Tags(s)

MAHCVTLVQLSISCDHLIDKDIGSKSDPLCVLLQDVGGGSWAELGRTERVRNCSSPEFSKTLQLEYRFET  
VQKLRFGIYDIDNKTPELRDDDGLGGAECSLGQIVSSQVLTLPMLKPGKPAAGRTITVSAQELKDNRW  
TMEVEARNLDKKDFLGKSDPFLEFFRQGDGKWHLVYRSEVIKNNLNPTWKRFVSVVQHFCCGPNSTPIQV  
QCSDYDSDGSHDLIGTFHTSLAQLQAVPAEFECIHPEKQKQKKSYSKNSGTIRVKICRVETEYSFLDYVMG  
GCQINFTVGVDFTGSNGDPSSPSLHLYSPTGVNEYLMALWSVGSVWQDYDSDKLFPAFGFGAQVPPDWQ  
VSHEFALNFNPSNPYCAGIQGIVDAYRQALPQVRLYGPTNFAPIINHVARFAAQAHAHQGTASQYFMLLLL  
TDGAVTDVEATREAVVRASNLPMSVIIVGVGGADFEAMEQLDADGGPLHTRSGQAAARDIVQFVPPYRRFQ  
NAPREALAQTVLAEVPTQLVSYFRAQGWAPLKLPPSAKDPAQAPQA

**TRTRPLEQKLISEEDLAANDILDYKDDDDKV**

**Tag:** C-Myc/DDK

**Predicted MW:** 58.9 kDa

**Concentration:** >0.05 µg/µL as determined by microplate BCA method

**Purity:** > 80% as determined by SDS-PAGE and Coomassie blue staining

**Buffer:** 25 mM Tris-HCl, 100 mM glycine, pH 7.3, 10% glycerol

**Preparation:** Recombinant protein was captured through anti-DDK affinity column followed by conventional chromatography steps.

**Note:** For testing in cell culture applications, please filter before use. Note that you may experience some loss of protein during the filtration process.

**Storage:** Store at -80°C.

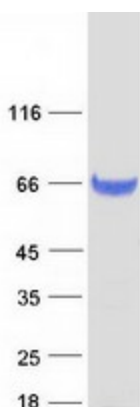
**Stability:** Stable for 12 months from the date of receipt of the product under proper storage and handling conditions. Avoid repeated freeze-thaw cycles.



[View online »](#)

RefSeq:	<a href="#">NP_690906</a>
Locus ID:	8904
UniProt ID:	<a href="#">Q99829</a>
RefSeq Size:	2199
Cytogenetics:	20q11.22
RefSeq ORF:	1611
Synonyms:	copine-1; copine I; COPN1; CPN1; MGC1142; OTTHUMP00000030775; OTTHUMP00000030776
Summary:	Calcium-dependent membrane-binding proteins may regulate molecular events at the interface of the cell membrane and cytoplasm. This gene encodes a calcium-dependent protein that also contains two N-terminal type II C2 domains and an integrin A domain-like sequence in the C-terminus. However, the encoded protein does not contain a predicted signal sequence or transmembrane domains. This protein has a broad tissue distribution and it may function in membrane trafficking. This gene and the gene for RNA binding motif protein 12 overlap at map location 20q11.21. Alternate splicing results in multiple transcript variants encoding different proteins. [provided by RefSeq, Aug 2008]

### Product images:



Coomassie blue staining of purified CPNE1 protein (Cat# TP321043). The protein was produced from HEK293T cells transfected with CPNE1 cDNA clone (Cat# [RC221043]) using MegaTran 2.0 (Cat# [TT210002]).