

Product datasheet for **TP321032M**

DEFB108B (NM_001002035) Human Recombinant Protein

Product data:

Product Type:	Recombinant Proteins
Description:	Recombinant protein of human defensin, beta 108B (DEFB108B), 100 µg
Species:	Human
Expression Host:	HEK293T
Expression cDNA Clone or AA Sequence:	>RC221032 representing NM_001002035 Red =Cloning site Green =Tags(s)
	MRIAVLLFAIFFFMSQVLPARGKFKEICERPNGSCRDFCLETEIHVGRCLNSQPCCPLPLGHQPRIESTTP KKD
	TR TRPLEQKLISEEDLAANDILDYKDDDDKV
Tag:	C-Myc/DDK
Predicted MW:	8.1 kDa
Concentration:	>0.05 µg/µL as determined by microplate BCA method
Purity:	> 80% as determined by SDS-PAGE and Coomassie blue staining
Buffer:	25 mM Tris-HCl, 100 mM glycine, pH 7.3, 10% glycerol
Preparation:	Recombinant protein was captured through anti-DDK affinity column followed by conventional chromatography steps.
Note:	For testing in cell culture applications, please filter before use. Note that you may experience some loss of protein during the filtration process.
Storage:	Store at -80°C.
Stability:	Stable for 12 months from the date of receipt of the product under proper storage and handling conditions. Avoid repeated freeze-thaw cycles.
RefSeq:	NP_001002035
Locus ID:	245911
UniProt ID:	Q8NET1
RefSeq Size:	222
Cytogenetics:	11q13.4



[View online »](#)

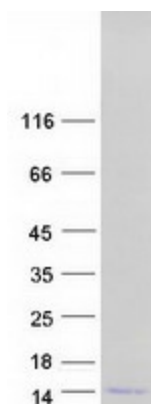
RefSeq ORF: 219

Synonyms: DEFB-8; hBD-8

Summary: Defensins form a family of antimicrobial and cytotoxic peptides made by neutrophils. Defensins are short, processed peptide molecules that are classified by structure into three groups: alpha-defensins, beta-defensins and theta-defensins. All beta-defensin genes are densely clustered in four to five syntenic chromosomal regions. A pseudogene of this gene has been found on chromosome 8. [provided by RefSeq, Oct 2014]

Protein Families: Secreted Protein

Product images:



Coomassie blue staining of purified DEFB108B protein (Cat# [TP321032]). The protein was produced from HEK293T cells transfected with DEFB108B cDNA clone (Cat# [RC221032]) using MegaTran 2.0 (Cat# [TT210002]).