

Product datasheet for **TP321003L**

ADAMTSL5 (NM_213604) Human Recombinant Protein

Product data:

Product Type:	Recombinant Proteins
Description:	Recombinant protein of human ADAMTS-like 5 (ADAMTSL5), 1 mg
Species:	Human
Expression Host:	HEK293T
Expression cDNA	>RC221003 representing NM_213604
Clone or AA Sequence:	Red=Cloning site Green=Tags(s)

MDSAPLFPRPHLFQNLFLWALLNCGLGVSAQGPGEWTPWVSWTRCSSSCGRGVSVRSRRCLRLPGEEP
CWGDSHEYRLCQLPDCPPGAVPFRDLQCALYNGRPVLTQKTYQWVPFHGAPNQCDLNCLAEGHAFYHSF
GRVLDGTACSPGAQGVAVGRCLVAGCDGLLGSGALEDRCGRCGGANDSCLFVQRVFRDAGAFAGYWNVT
LIPEGARHIRVEHRSRNLALMGDDGRYVLNGHWVSPPGTYEAAGTHVYTRDTGPQETLQAAGPTSHD
LLLQVLLQEPNPGIEFEFWLPRERYSPFQARVQALGWPLRQPQPRGVEPQPPAAPAVTPAQTPTLAPDPC
PPCPDTRGRAHRLHYCGSDFVFQARVLGHHHQAQETRYEVRIQLVYKNRSPLRAREYVWAPGHCPMPL
APHRDYLMVQRLVSPDGTQDQQLLPHAGYARPWSPAEDSRIRLTARRCPG

TRTRPLEQKLISEEDLAANDILDYKDDDDKV

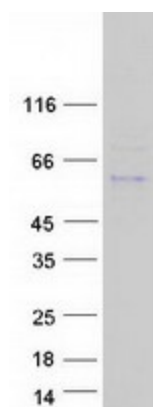
Tag:	C-Myc/DDK
Predicted MW:	51.9 kDa
Concentration:	>0.05 µg/µL as determined by microplate BCA method
Purity:	> 80% as determined by SDS-PAGE and Coomassie blue staining
Buffer:	25 mM Tris-HCl, 100 mM glycine, pH 7.3, 10% glycerol
Preparation:	Recombinant protein was captured through anti-DDK affinity column followed by conventional chromatography steps.
Note:	For testing in cell culture applications, please filter before use. Note that you may experience some loss of protein during the filtration process.
Storage:	Store at -80°C.
Stability:	Stable for 12 months from the date of receipt of the product under proper storage and handling conditions. Avoid repeated freeze-thaw cycles.
RefSeq:	NP_998769



[View online »](#)

Locus ID:	339366
UniProt ID:	Q6ZMM2 , Q0VD77 , X6R4H8
RefSeq Size:	2682
Cytogenetics:	19p13.3
RefSeq ORF:	1413
Synonyms:	THSD6
Summary:	May play a role in modulation of fibrillin microfibrils in the extracellular matrix (ECM). [UniProtKB/Swiss-Prot Function]
Protein Families:	Secreted Protein

Product images:



Coomassie blue staining of purified ADAMTSL5 protein (Cat# [TP321003]). The protein was produced from HEK293T cells transfected with ADAMTSL5 cDNA clone (Cat# [RC221003]) using MegaTran 2.0 (Cat# [TT210002]).