

Product datasheet for TP320994L

CHRNA2 (NM_000742) Human Recombinant Protein

Product data:

Product Type:	Recombinant Proteins
Description:	Recombinant protein of human cholinergic receptor, nicotinic, alpha 2 (neuronal) (CHRNA2), 1 mg
Species:	Human
Expression Host:	HEK293T
Expression cDNA Clone or AA Sequence:	>RC220994 representing NM_000742 Red=Cloning site Green=Tags(s)

MGPSCPVFLSFTKLSLWLLLLIPAGGEEAKRPPPRAPGDPLSSPSPTALPQGGSHTEDETDLRFKHLFRGY
NRWARPVNNTSDVIVRFGLSIAQLIDVDEKNQMMTTNVWLKQEWSDYKLRWNPADFGNITSLRVPSEMI
WIPDIVLYNNADGEFAVTHMTKAHLFSTGTVHWVPPAIYKSSCSIDVTFPFQDQNCMKMFGSWTYDKAK
IDLEQMEQTVDLKDYWESGEWAIVNATGTYNSSKYDCCAIEYPDVYAFVIRRLPLFYTINLIIPCLLIS
CLTVLVFYLPSDCGKITLCSVLLSLTVFLLITEIIPSTSLVIPLIGEYLLFTMIFVTLISIVITVFVL
NVHHRSPSTHTMPHWVRGALLGCVPRWLLMNRPPPPVELCHPLRLKLSPSYHWLESNVDAEEREVVVEEE
DRWACAGHVAPSVGTLCSHGHLHSGASGPKAEALLQEGELLLSPHMQKALEGVHYIADHLRSEDADSSVK
EDWKYVAMVIDRIFLWLFIVCFLGTIGLFLPPFLAGMI

TRTRPLEQKLISEEDLAANDILDYKDDDDKV

Tag:	C-Myc/DDK
Predicted MW:	56.9 kDa
Concentration:	>0.05 µg/µL as determined by microplate BCA method
Purity:	> 80% as determined by SDS-PAGE and Coomassie blue staining
Buffer:	25 mM Tris-HCl, 100 mM glycine, pH 7.3, 10% glycerol
Preparation:	Recombinant protein was captured through anti-DDK affinity column followed by conventional chromatography steps.
Note:	For testing in cell culture applications, please filter before use. Note that you may experience some loss of protein during the filtration process.
Storage:	Store at -80°C.



[View online »](#)

Stability: Stable for 12 months from the date of receipt of the product under proper storage and handling conditions. Avoid repeated freeze-thaw cycles.

RefSeq: [NP_000733](#)

Locus ID: 1135

UniProt ID: [Q15822](#)

RefSeq Size: 2664

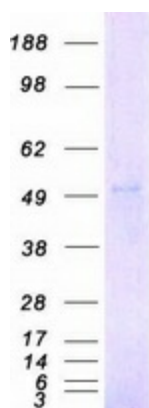
Cytogenetics: 8p21.2

RefSeq ORF: 1587

Summary: Nicotinic acetylcholine receptors (nAChRs) are ligand-gated ion channels formed by a pentameric arrangement of alpha and beta subunits to create distinct muscle and neuronal receptors. Neuronal receptors are found throughout the peripheral and central nervous system where they are involved in fast synaptic transmission. This gene encodes an alpha subunit that is widely expressed in the brain. The proposed structure for nAChR subunits is a conserved N-terminal extracellular domain followed by three conserved transmembrane domains, a variable cytoplasmic loop, a fourth conserved transmembrane domain, and a short C-terminal extracellular region. Mutations in this gene cause autosomal dominant nocturnal frontal lobe epilepsy type 4. Single nucleotide polymorphisms (SNPs) in this gene have been associated with nicotine dependence. [provided by RefSeq, Nov 2009]

Protein Families: Druggable Genome, Ion Channels: Cys-loop Receptors, Transmembrane

Product images:



Coomassie blue staining of purified CHRNA2 protein (Cat# [TP320994]). The protein was produced from HEK293T cells transfected with CHRNA2 cDNA clone (Cat# [RC220994]) using MegaTran 2.0 (Cat# [TT210002]).