

Product datasheet for **TP320985L**

SLAMF7 (NM_021181) Human Recombinant Protein

Product data:

Product Type:	Recombinant Proteins
Description:	Recombinant protein of human SLAM family member 7 (SLAMF7), 1 mg
Species:	Human
Expression Host:	HEK293T
Expression cDNA Clone or AA Sequence:	>RC220985 representing NM_021181 Red =Cloning site Green =Tags(s)

MAGSPTCLTLIYLWQLTGSAASGPVKELVGSVGGAVTFPLKSKVKQVDSIVWTFNTTPLVTIQPEGGTI
IVTQNRNRERVDFFDGGYSLKLSKLNKNDGSIYVYVGIYSSSLQQPSTQEYVLHVYEHLSKPKVTMGLQSN
KNGTCVTNLTCCMEHGEEDEVITWKALGQAANESHNGSILPISWRWGESDMTFICVARNPVSRNFSSPIL
ARKLCEGAADDPDSSMVLCLLLVPLLLSLFVGLFLWFLKRERQEEYIEKKRVDICRETPNICPHSGE
NTEYDTIPHTNRTILKEDPANTVYSTVEIPKKMENPHSLLTMPDTPRLFAYENVI

TRTRPLEQKLISEEDLAANDILDYKDDDDKV

Tag:	C-Myc/DDK
Predicted MW:	37.2 kDa
Concentration:	>0.05 µg/µL as determined by microplate BCA method
Purity:	> 80% as determined by SDS-PAGE and Coomassie blue staining
Buffer:	25 mM Tris-HCl, 100 mM glycine, pH 7.3, 10% glycerol
Preparation:	Recombinant protein was captured through anti-DDK affinity column followed by conventional chromatography steps.
Note:	For testing in cell culture applications, please filter before use. Note that you may experience some loss of protein during the filtration process.
Storage:	Store at -80°C.
Stability:	Stable for 12 months from the date of receipt of the product under proper storage and handling conditions. Avoid repeated freeze-thaw cycles.
RefSeq:	<u>NP_067004</u>
Locus ID:	57823



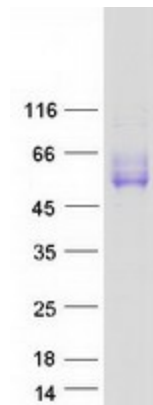
[View online »](#)

UniProt ID:	Q9NQ25
RefSeq Size:	2672
Cytogenetics:	1q23.3
RefSeq ORF:	1005
Synonyms:	19A; CD319; CRACC; CS1

Summary: Self-ligand receptor of the signaling lymphocytic activation molecule (SLAM) family. SLAM receptors triggered by homo- or heterotypic cell-cell interactions are modulating the activation and differentiation of a wide variety of immune cells and thus are involved in the regulation and interconnection of both innate and adaptive immune response. Activities are controlled by presence or absence of small cytoplasmic adapter proteins, SH2D1A/SAP and/or SH2D1B/EAT-2. Isoform 1 mediates NK cell activation through a SH2D1A-independent extracellular signal-regulated ERK-mediated pathway (PubMed:11698418). Positively regulates NK cell functions by a mechanism dependent on phosphorylated SH2D1B. Downstream signaling implicates PLCG1, PLCG2 and PI3K (PubMed:16339536). In addition to heterotypic NK cells-target cells interactions also homotypic interactions between NK cells may contribute to activation. However, in the absence of SH2D1B, inhibits NK cell function. Acts also inhibitory in T-cells (By similarity). May play a role in lymphocyte adhesion (PubMed:11802771). In LPS-activated monocytes negatively regulates production of proinflammatory cytokines (PubMed:23695528).[UniProtKB/Swiss-Prot Function]

Protein Families: Druggable Genome, Transmembrane

Product images:



Coomassie blue staining of purified SLAMF7 protein (Cat# [TP320985]). The protein was produced from HEK293T cells transfected with SLAMF7 cDNA clone (Cat# [RC220985]) using MegaTran 2.0 (Cat# [TT210002]).