

Product datasheet for **TP320960L**

NUMB (NM_001005743) Human Recombinant Protein

Product data:

Product Type: Recombinant Proteins
Description: Recombinant protein of human numb homolog (Drosophila) (NUMB), transcript variant 1, 1 mg
Species: Human
Expression Host: HEK293T
Expression cDNA >RC220960 representing NM_001005743
Clone or AA Sequence: **Red**=Cloning site **Green**=Tags(s)

MNKLRSFRKKDVVPEASRPHQWQTDEEGVRTGKCSFPVKYLGHVVEDESRGMHICEDAVKRLKAERK
FFKGGFFGKTGKKAVKAVLWVSADGLRVVDEKTKDLIVDQTIKVSFCAPDRNFDRAFSYICRDGTTTRRWI
CHCFMAVKDTGERLSHAVGCAFAACLERKQKREKECGVTATFDASRTTFTREGSFRVTTATEQAKREEIM
KQMQDAKKAETDKIVVGSSVAPGNTAPSPSSPTSPTSDATTSLEMNNPHAIARRHAPIELARQGSFRGF
PALSQKMSPFKRQLSLRINELPSTMQRKTDFFIKNAVPEVEGEAESISSLCSQITNAFSTPEDPFSSAPM
TKPVTVAPQSPTFQANGTDSAFHVLAKPAHTALAPVAMPVRETNPWAHAPDAANKEIAATCSGTEWQGS
SGAASPLGFQAGHRRTPSEADRWLEEVSKSVRAQQPQASAAPLQPVLPPTAISQPASPFQGNFLTS
QPVPVGVVPALQPAFVPAQSYVANGMPYPAPNVPVVGITPSQMVANVFGTAGHPQAAHPHQSPSLVRQQ
TFPHYEASSATTSPFFKPPAQHLNGSAAFNGVDDGRLASADRHTEVPTGTCPVDPFEAQWAALENKSKQR
TNPSPTNPFSSDLQKTFEIEL

TRTRPLEQKLISEEDLAANDILDYKDDDDKV

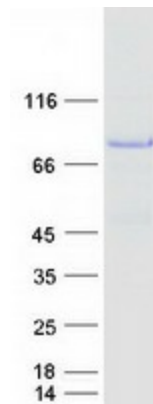
Tag: C-Myc/DDK
Predicted MW: 70.6 kDa
Concentration: >0.05 µg/µL as determined by microplate BCA method
Purity: > 80% as determined by SDS-PAGE and Coomassie blue staining
Buffer: 25 mM Tris-HCl, 100 mM glycine, pH 7.3, 10% glycerol
Preparation: Recombinant protein was captured through anti-DDK affinity column followed by conventional chromatography steps.
Note: For testing in cell culture applications, please filter before use. Note that you may experience some loss of protein during the filtration process.
Storage: Store at -80°C.



[View online >](#)

Stability:	Stable for 12 months from the date of receipt of the product under proper storage and handling conditions. Avoid repeated freeze-thaw cycles.
RefSeq:	NP_001005743
Locus ID:	8650
UniProt ID:	P49757 , A0A024R6F4
RefSeq Size:	3647
Cytogenetics:	14q24.2-q24.3
RefSeq ORF:	1953
Synonyms:	C14orf41; c14_5527; S171
Summary:	The protein encoded by this gene plays a role in the determination of cell fates during development. The encoded protein, whose degradation is induced in a proteasome-dependent manner by MDM2, is a membrane-bound protein that has been shown to associate with EPS15, LNX1, and NOTCH1. Alternative splicing results in multiple transcript variants. [provided by RefSeq, Feb 2016]
Protein Pathways:	Notch signaling pathway

Product images:



Coomassie blue staining of purified NUMB protein (Cat# [TP320960]). The protein was produced from HEK293T cells transfected with NUMB cDNA clone (Cat# [RC220960]) using MegaTran 2.0 (Cat# [TT210002]).