

## Product datasheet for **TP320945**

### Kallikrein 9 (KLK9) (NM\_012315) Human Recombinant Protein

#### Product data:

|                                       |   |
|---------------------------------------|---|
| Product Type:                         | Recombinant Proteins  |
| Description:                          | Recombinant protein of human kallikrein-related peptidase 9 (KLK9), 20 µg   |
| Species:                              | Human   |
| Expression Host:                      | HEK293T   |
| Expression cDNA Clone or AA Sequence: | >RC220945 representing NM_012315<br><b>Red</b> =Cloning site <b>Green</b> =Tags(s)  |
|                                       | MKLGLLCALLSLLAGHWADTRAIGAEECRPNSQPWQAGLFHLTRLFCGATLISDRWLLTAAHCRKPYLW<br>VRLGEHHLWKWEGPEQLFRVTDFPHPGFNKDLSANDHNDDIMLIRLPRQARLSPAVQPLNLSQTCVSPG<br>MQCLISGWGAVSSPKALFPVTLQCANISILENKLCHWAYPGHISDSMLCAGLWEGGRGSCQGDSGGPLVC<br>NGTLAGVSGGAEPCSRPRRPAVYTSVCHYLDWIQEIMEN |
|                                       | <b>TR</b> TRPLE <b>QKLISEEDLA</b> AND <b>ILDYKDDDDKV</b>  |
| Tag:                                  | C-Myc/DDK   |
| Predicted MW:                         | 27.3 kDa  |
| Concentration:                        | >0.05 µg/µL as determined by microplate BCA method  |
| Purity:                               | > 80% as determined by SDS-PAGE and Coomassie blue staining   |
| Buffer:                               | 25 mM Tris-HCl, 100 mM glycine, pH 7.3, 10% glycerol  |
| Preparation:                          | Recombinant protein was captured through anti-DDK affinity column followed by conventional chromatography steps.  |
| Note:                                 | For testing in cell culture applications, please filter before use. Note that you may experience some loss of protein during the filtration process.  |
| Storage:                              | Store at -80°C.   |
| Stability:                            | Stable for 12 months from the date of receipt of the product under proper storage and handling conditions. Avoid repeated freeze-thaw cycles.   |
| RefSeq:                               | <u><a href="#">NP_036447</a></u>  |
| Locus ID:                             | 284366  |
| UniProt ID:                           | <u><a href="#">Q9UKQ9</a></u>   |



[View online »](#)

RefSeq Size: 1438

Cytogenetics: 19q13.41

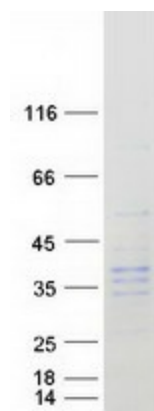
RefSeq ORF: 750

Synonyms: KLK-L3; KLKL3

**Summary:** The protein encoded by this gene is a kallikrein-related serine protease. This gene is activated by steroid hormones in a human breast cancer cell line, making it a good marker for cancer detection. The encoded protein is found primarily in the cytoplasm.[provided by RefSeq, Oct 2010]

**Protein Families:** Druggable Genome, Protease, Secreted Protein

## Product images:



Coomassie blue staining of purified KLK9 protein (Cat# TP320945). The protein was produced from HEK293T cells transfected with KLK9 cDNA clone (Cat# [RC220945]) using MegaTran 2.0 (Cat# [TT210002]).