

## Product datasheet for TP320942

### CT45A2 (NM\_152582) Human Recombinant Protein

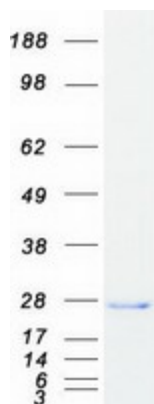
#### Product data:

Product Type:	Recombinant Proteins
Description:	Recombinant protein of human cancer/testis antigen family 45, member A2 (CT45A2), 20 µg
Species:	Human
Expression Host:	HEK293T
Expression cDNA Clone or AA Sequence:	>RC220942 representing NM_152582 <b>Red</b> =Cloning site <b>Green</b> =Tags(s)  MTDKTEKVAVDPETVFKRPRECDSPSYQKRQRMALLARKQGAGDSLIAGSAMSKEKKLMTGHAIPPSQLD SQIDDFTGFSKDRMMQKPGSNAPVGGNVTSFSGDDLECRETASSPKSQREINADIKRKLVKELRCVGQK YEKIFEMLEGVQGPTAVRKRRFFESIIKEAARCMRRDFVKHLKKKLKRM  <b>TRTRPLEQKLISEEDLAANDILDYKDDDDKV</b>
Tag:	C-Myc/DDK
Predicted MW:	21.1 kDa
Concentration:	>0.05 µg/µL as determined by microplate BCA method
Purity:	> 80% as determined by SDS-PAGE and Coomassie blue staining
Buffer:	25 mM Tris-HCl, 100 mM glycine, pH 7.3, 10% glycerol
Preparation:	Recombinant protein was captured through anti-DDK affinity column followed by conventional chromatography steps.
Note:	For testing in cell culture applications, please filter before use. Note that you may experience some loss of protein during the filtration process.
Storage:	Store at -80°C.
Stability:	Stable for 12 months from the date of receipt of the product under proper storage and handling conditions. Avoid repeated freeze-thaw cycles.
RefSeq:	<a href="#">NP_689795</a>
Locus ID:	728911
UniProt ID:	<a href="#">Q5DJT8</a>
RefSeq Size:	1032


[View online »](#)

Cytogenetics:	Xq26.3
RefSeq ORF:	567
Synonyms:	CT45-2; CT45.2; CT45A8; CT45A9
Summary:	This gene represents one of a cluster of several similar genes located on the q arm of chromosome X. The genes in this cluster encode members of the cancer/testis (CT) family of antigens, and are distinct from other CT antigens. These antigens are thought to be novel therapeutic targets for human cancers. [provided by RefSeq, Apr 2014]

### Product images:



Coomassie blue staining of purified CT45A2 protein (Cat# TP320942). The protein was produced from HEK293T cells transfected with CT45A2 cDNA clone (Cat# [RC220942]) using MegaTran 2.0 (Cat# [TT210002]).