

Product datasheet for TP320941

ADAM11 (NM_002390) Human Recombinant Protein

Product data:

Product Type:	Recombinant Proteins
Description:	Recombinant protein of human ADAM metallopeptidase domain 11 (ADAM11), 20 µg
Species:	Human
Expression Host:	HEK293T
Expression cDNA Clone or AA Sequence:	>RC220941 representing NM_002390 Red =Cloning site Green =Tags(s)

MRLRRWAF AALLSLLPTPGLGTQGPAGALRWGGLPQLGGPGAPEVTEPSRLVRESSGGEVRKQQLDTR
 VRQEPGGPPVHLAQVSFVIPAFNSNFTLDLELNHHLLSSQYVERHFSREGTTQHSTGAGDHCYYQGKLR
 GNPHSFAALSTCQGLHGVFSDGNLTYIVEPQEVAGPWGAPQGGLPHLIYRTPLLPDPLGCREPGCLFAVP
 AQSAPPNRPRLRRKRQVRRGHPTVHSETKYVELIVINDHQLFEQMRQSVVLTSNFAKSVVNLADVIYKEQ
 LNTRIVLVAMETWADGDKIQVQDDLLETARLMVYRREGLPEPSDATHLFSGRTFQSTSSGAAYVGGICS
 LSHGGGVNEYGNMGAMAVTLAQT LGQNLGMMWNKHRSSAGDCKCPDIWLG CIMEDTGFYLPRKFSRC
 SID
 EYNQFLQEGGGSCLFNKPLKLLDPPECGNGFVEAGEECDGSGVQEC SRAGGNCKKCTLTHDAMCSDGL
 C
 CRRCKYEPRGVSCREAVNECDIAETCTGDSSQCPPNLHKLDGYCDHEQGRCYGGRCKTRDRQCQVLWG
 H
 AAADRFCYEKLNVEGTERGSCGRKGSWVQCSKQDVLGCGFLLCVNISGAPRLGDLVGDISSVTFYHQGKE
 LDCRGGHVQLADGSDLSYVEDGTACGPNMLCLDHRCLPASAFNFSTCPGSGERRICSHHGVCSNEGKCIC
 QPDWTGKDCSIHNPLTSPPTGETERYKGPSGTNIIIGSIAGAVLVAAIVLGGTGWGFKNIRRRSGGA

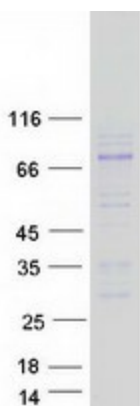
TRTRPLEQKLISEEDLAANDILDYKDDDDKV

Tag:	C-Myc/DDK
Predicted MW:	83.2 kDa
Concentration:	>0.05 µg/µL as determined by microplate BCA method
Purity:	> 80% as determined by SDS-PAGE and Coomassie blue staining
Buffer:	25 mM Tris-HCl, 100 mM glycine, pH 7.3, 10% glycerol
Preparation:	Recombinant protein was captured through anti-DDK affinity column followed by conventional chromatography steps.


[View online »](#)

Note:	For testing in cell culture applications, please filter before use. Note that you may experience some loss of protein during the filtration process.
Storage:	Store at -80°C.
Stability:	Stable for 12 months from the date of receipt of the product under proper storage and handling conditions. Avoid repeated freeze-thaw cycles.
RefSeq:	NP_002381
Locus ID:	4185
UniProt ID:	Q75078
RefSeq Size:	4402
Cytogenetics:	17q21.31
RefSeq ORF:	2307
Synonyms:	MDC
Summary:	This gene encodes a member of the ADAM (a disintegrin and metalloprotease) protein family. Members of this family are membrane-anchored proteins structurally related to snake venom disintegrins, and have been implicated in a variety of biological processes involving cell-cell and cell-matrix interactions, including fertilization, muscle development, and neurogenesis. The encoded preproprotein is proteolytically processed to generate the mature protease. This gene represents a candidate tumor suppressor gene for human breast cancer based on its location within a minimal region of chromosome 17q21 previously defined by tumor deletion mapping. Alternative splicing results in multiple transcript variants, at least one of which encodes an isoform that is proteolytically processed. [provided by RefSeq, Jan 2016]
Protein Families:	Druggable Genome, Transmembrane

Product images:



Coomassie blue staining of purified ADAM11 protein (Cat# TP320941). The protein was produced from HEK293T cells transfected with ADAM11 cDNA clone (Cat# [RC220941]) using MegaTran 2.0 (Cat# [TT210002]).