

## Product datasheet for **TP320927L**

### **C6orf226 (NM\_001008739) Human Recombinant Protein**

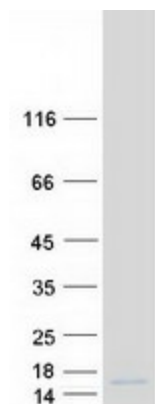
#### Product data:

Product Type:	Recombinant Proteins
Description:	Recombinant protein of human chromosome 6 open reading frame 226 (C6orf226), 1 mg
Species:	Human
Expression Host:	HEK293T
Expression cDNA Clone or AA Sequence:	>RC220927 protein sequence <b>Red</b> =Cloning site <b>Green</b> =Tags(s)  MERPRSPQCSAPASASASVTLAQLQLVQQGQELPGLEKRHIAAIHGEPTASRLPRRPKPWEAAALAESL PPPTLRIGTAPAEPGLVEAATAPSSWHTVGP  <b>TRTRPLEQKLISEEDLAANDILDYKDDDDKV</b>
Tag:	C-Myc/DDK
Predicted MW:	10.4 kDa
Concentration:	>0.05 µg/µL as determined by microplate BCA method
Purity:	> 80% as determined by SDS-PAGE and Coomassie blue staining
Buffer:	25 mM Tris-HCl, 100 mM glycine, pH 7.3, 10% glycerol
Preparation:	Recombinant protein was captured through anti-DDK affinity column followed by conventional chromatography steps.
Note:	For testing in cell culture applications, please filter before use. Note that you may experience some loss of protein during the filtration process.
Storage:	Store at -80°C.
Stability:	Stable for 12 months from the date of receipt of the product under proper storage and handling conditions. Avoid repeated freeze-thaw cycles.
RefSeq:	<a href="#">NP_001008739</a>
Locus ID:	441150
UniProt ID:	<a href="#">Q5I0X4</a>
RefSeq Size:	572
Cytogenetics:	6p21.1


[View online »](#)

RefSeq ORF: 303

### Product images:



Coomassie blue staining of purified C6orf226 protein (Cat# [TP320927]). The protein was produced from HEK293T cells transfected with C6orf226 cDNA clone (Cat# [RC220927]) using MegaTran 2.0 (Cat# [TT210002]).