

Product datasheet for TP320905

Lipophilin B (SCGB1D2) (NM_006551) Human Recombinant Protein

Product data:

| | |
|---------------------------------------|--|
| Product Type: | Recombinant Proteins |
| Description: | Recombinant protein of human secretoglobin, family 1D, member 2 (SCGB1D2), 20 µg |
| Species: | Human |
| Expression Host: | HEK293T |
| Expression cDNA Clone or AA Sequence: | >RC220905 protein sequence Red=Cloning site Green=Tags(s) |
| | MKLSVCLLLVTLALCCYQANAFCPALVSELLDFFFISEPLFKLSLAKFDAPPEAVA AKLGVKRCTDQMS LQKRSLIAEVLVKILKKCSV |
| | TRTRPLEQKLISEEDLAANDILDYKDDDDKV |
| Tag: | C-Myc/DDK |
| Predicted MW: | 7.6 kDa |
| Concentration: | >0.05 µg/µL as determined by microplate BCA method |
| Purity: | > 80% as determined by SDS-PAGE and Coomassie blue staining |
| Buffer: | 25 mM Tris-HCl, 100 mM glycine, pH 7.3, 10% glycerol |
| Preparation: | Recombinant protein was captured through anti-DDK affinity column followed by conventional chromatography steps. |
| Note: | For testing in cell culture applications, please filter before use. Note that you may experience some loss of protein during the filtration process. |
| Storage: | Store at -80°C. |
| Stability: | Stable for 12 months from the date of receipt of the product under proper storage and handling conditions. Avoid repeated freeze-thaw cycles. |
| RefSeq: | NP_006542 |
| Locus ID: | 10647 |
| UniProt ID: | O95969 |
| RefSeq Size: | 454 |
| Cytogenetics: | 11q12.3 |



[View online »](#)

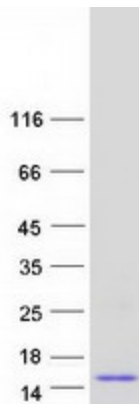
RefSeq ORF: 270

Synonyms: LIPB; LPHB; LPNB

Summary: The protein encoded by this gene is a member of the lipophilin subfamily, part of the uteroglobin superfamily, and is an ortholog of prostatein, the major secretory glycoprotein of the rat ventral prostate gland. Lipophilin gene products are widely expressed in normal tissues, especially in endocrine-responsive organs. Assuming that human lipophilins are the functional counterparts of prostatein, they may be transcriptionally regulated by steroid hormones, with the ability to bind androgens, other steroids and possibly bind and concentrate estramustine, a chemotherapeutic agent widely used for prostate cancer. Although the gene has been reported to be on chromosome 10, this sequence appears to be from a cluster of genes on chromosome 11 that includes mammaglobin 2. [provided by RefSeq, Jul 2008]

Protein Families: Secreted Protein

Product images:



Coomassie blue staining of purified SCGB1D2 protein (Cat# TP320905). The protein was produced from HEK293T cells transfected with SCGB1D2 cDNA clone (Cat# [RC220905]) using MegaTran 2.0 (Cat# [TT210002]).