

## Product datasheet for **TP320884L**

### Esa1 (FLOT2) (NM\_004475) Human Recombinant Protein

#### Product data:

**Product Type:** Recombinant Proteins  
**Description:** Purified recombinant protein of Homo sapiens flotillin 2 (FLOT2), 1 mg  
**Species:** Human  
**Expression Host:** HEK293T  
**Expression cDNA Clone or AA Sequence:** >RC220884 representing NM\_004475  
**Red**=Cloning site **Green**=Tags(s)

MGNCHTVGPNEALVSGGCCSDYKQYVFGGWAWAWWCISDTQRISLEIMTLQPRCEDVETAEGVALTVT  
GVAQVKIMTEKELLAVACEQFLGKNVQDIKNVVLQTLEGHLSILGTLTVEQIYQDRDQFAKLVREVAAP  
DVGRMGIEILSFTIKDVYDKVDYLSSLGKTQTAVVQRDADIGVAEAERDAGIREAECKKEMLDVKFMADT  
KIADSKRAFELQKSAFSEEVNIKTAEAQLAYELQGAREQQKIRQEEIEIEVVQRKKQIAVEAQEILRTDK  
ELIATVRRPAEAEAHRIQQIAEGEKVKQVLLAQAEAEKIRKIGEAEEAVIEAMGKAEAEARMKLAEAYQK  
YGDAAKMALVLEALPQIAAKIAAPLTKVDEIVVLSGDNSKVTSEVNRLLAELPASVHALTGVDLSKIPLI  
KKATGVQV

**TRTRP**LEQKLISEEDLAANDILDYKDDDDKV

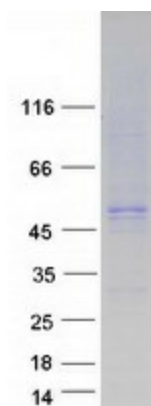
**Tag:** C-Myc/DDK  
**Predicted MW:** 46.9 kDa  
**Concentration:** >0.05 µg/µL as determined by microplate BCA method  
**Purity:** > 80% as determined by SDS-PAGE and Coomassie blue staining  
**Buffer:** 25 mM Tris-HCl, 100 mM glycine, pH 7.3, 10% glycerol  
**Preparation:** Recombinant protein was captured through anti-DDK affinity column followed by conventional chromatography steps.  
**Note:** For testing in cell culture applications, please filter before use. Note that you may experience some loss of protein during the filtration process.  
**Storage:** Store at -80°C.  
**Stability:** Stable for 12 months from the date of receipt of the product under proper storage and handling conditions. Avoid repeated freeze-thaw cycles.  
**RefSeq:** [NP\\_004466](#)



[View online »](#)

Locus ID:	2319
UniProt ID:	<a href="#">Q14254</a> , <a href="#">A0A024QZ62</a> , <a href="#">Q9BTI6</a>
RefSeq Size:	2659
Cytogenetics:	17q11.2
RefSeq ORF:	1284
Synonyms:	ECS-1; ECS1; ESA; ESA1; M17S1
Summary:	Caveolae are small domains on the inner cell membrane involved in vesicular trafficking and signal transduction. This gene encodes a caveolae-associated, integral membrane protein, which is thought to function in neuronal signaling. [provided by RefSeq, Jul 2008]
Protein Families:	Druggable Genome
Protein Pathways:	Insulin signaling pathway

### Product images:



Coomassie blue staining of purified FLOT2 protein (Cat# [TP320884]). The protein was produced from HEK293T cells transfected with FLOT2 cDNA clone (Cat# [RC220884]) using MegaTran 2.0 (Cat# [TT210002]).